



INSTRAXX[®]

System Components Guide & Specifications

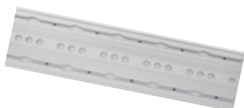


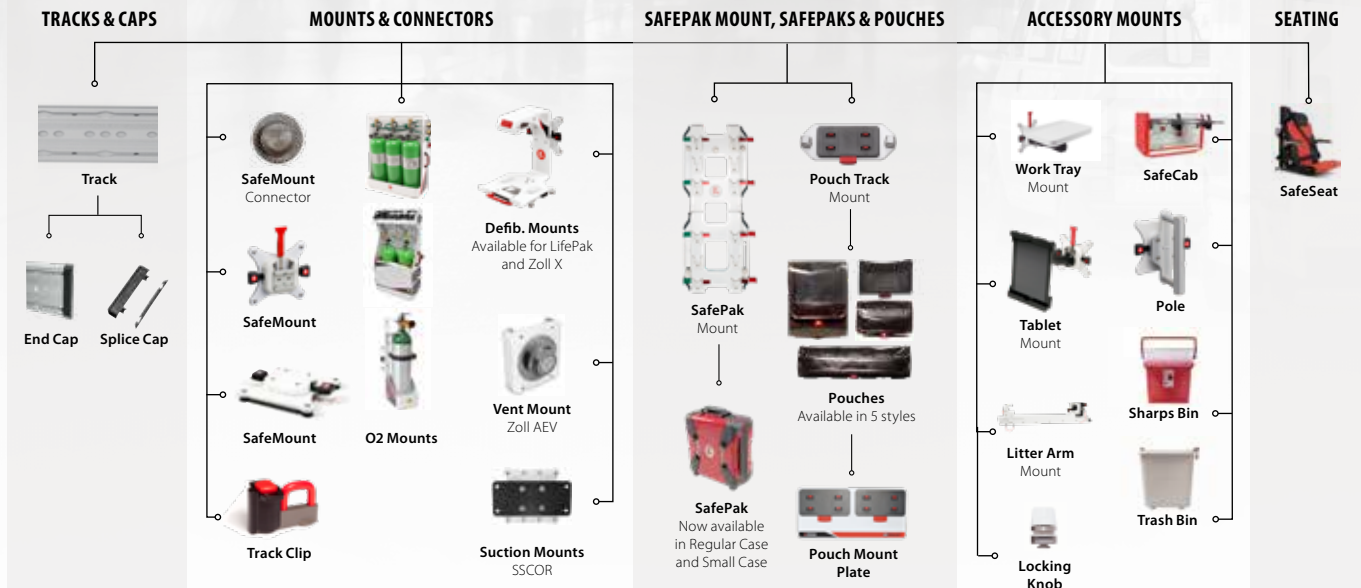


The iN/STRAXX Integrated Vehicle Component System **provides crash-ready safety** for providers and patients and **efficiency that reduces operating costs** for agencies.

The iN/STRAXX system is designed to secure loose equipment inside the ambulance and allow medics to deliver patient care from a seated, restrained position. This **reduces the risk of death and injury** during crashes, sudden stops, or hard maneuvers.

This modular system features wall-mounted tracks that secure a series of SafeMount Equipment Mounts, SafeCab Storage Cabinets, and SafePak Supply Bags. iN/STRAXX modularity supports better workflows and inventory management which **lowers operating costs**.





Delivery of care is now **safer, more convenient, and more efficient** with **IN/TRAXX**

CRASH TESTED SAFETY

- **Crash-ready** Dynamically crash-tested to the SAE J3043 requirement that keeps equipment secure during 26g impacts.
- **Seated & Restrained Delivery of Care** Reach supplies and deliver care without standing in a moving vehicle.
- **Soft-Sided Storage** SafePaks and pouches are soft-sided, eliminating potential strike hazards during hard maneuvers or crashes.

REDUCED PROCESSING TIME & MAINTENANCE

- **Faster Turn Time** SafePaks and pouches are easy to remove and clean, making restocking fast and easy.
- **Reduced Downtime** Damaged or out-of-service components can be quickly removed and replaced without taking a vehicle out of service.

REDUCED SYSTEM WASTE

- **Improved Inventory Control** SafePaks and pouches make inventory control easier with better visibility of supplies, reducing duplication, waste, and expired supplies.

IMPROVED ERGONOMICS

- **Easy Access** Modularity allows supplies and equipment to be placed next to the provider in the delivery of care position, eliminating the need to get up in a moving vehicle to access supplies.
- **Provider Specific Configuration** Quickly reposition equipment and supplies exactly where you want them.

IMPROVED FLEXIBILITY

- **Interoperability** Supplies and equipment are interchangeable across vehicles and vehicle types.
- **Mission-Specific Customization** Equipment and supplies can be removed or repositioned to adapt a vehicle to different response scenarios (e.g., viral outbreak or mass casualty).
- **Expandable System** Components can be added as your needs change.

IMPROVED INFECTION CONTROL

- **Cleaning and Decontamination** Components are removable and power washable for thorough, easy cleaning.
- **Containment** Individual pouches isolate potential contamination to specific areas, limiting the exposure of expensive supplies.

REDUCE COST OF OWNERSHIP

- **Reduced Space Requirements** Requires less space for storage and equipment, allowing use of smaller, less expensive vehicles.
- **Increased Utilization** Faster turn times so your vehicle is more readily available for revenue-generating activity.

All products come with a **2 Year Warranty**, unless stated otherwise.

CERTIFICATIONS Fully compliant with SAE J3043 testing requirements. Meets KKK-A-1822F, NFPA-1917, and CAAS GVS v2.0 Standards.

Learn more at www.fernoems.com/us/intraxx



Scalable to Any Size Vehicle

Track System | 1016 mm

Most commonly used track for wall and bench top applications and can be cut to size.



	IMPERIAL	METRIC
Part Number	0480001	
Dimensions	W 7.5 in D 0.5 in L 40 in	W 189 mm D 12.7 mm L 1016 mm
Weight	7.5 lb	3.4 kg
Load Capacity	55.1 lb	25 kg
Crash Tested	10g, 22g, 26g	

**Track System | 340 mm,
Black End Caps**

This short track is commonly used for mounting single pieces of equipment supplied with black end caps. This track is suitable for wall and bench top applications.



	IMPERIAL	METRIC
Part Number	0480062	
Dimensions	W 7.6 in D 0.7 in L 13.4 in	W 193 mm D 17 mm L 340 mm
Weight	2.6 lb	1.2 kg
Load Capacity	55.1 lb	25 kg
Crash Tested	10g, 22g, 26g	

* Limited Lifetime Warranty

**Track | 1016 mm
No Holes, (Bonding)**

This track is used for bonding applications where there are no fixing holes. This track is suitable for wall, ceiling and bench top applications. Bonding method is the sole responsibility of the person installing the track.



	IMPERIAL	METRIC
Part Number	0480073	
Dimensions	W 7.4 in D 0.5 in L 40 in	W 189 mm D 12.7 mm L 1016 mm
Weight	7.5 lb	3.4 kg
Load Capacity	220.4 lb	100 kg
Crash Tested	10g, 22g, 26g	

KEY

(W) Width is measured as 'Y' axis in relation to mounting to the track
 (D) Depth is measured as 'Z' axis in relation to mounting to the track
 (L) Length is measured as 'X' axis in relation to mounting to the track

Tracks

Track System | 1016 mm

Left & Right

This track is suitable for wall, ceiling and bench top applications. It has a single drop in zone located in either the left or right side.



	IMPERIAL	METRIC
Part Number	0480107	
Dimensions	W 7.4 in D 0.5 in L 40 in	W 189 mm D 12.7 mm L 1016 mm
Weight	7.5 lb	3.4 kg
Load Capacity	220.4 lb	100 kg
Crash Tested	10g, 22g, 26g	

Track System | 1016 mm

Blank

This track has no drop-in zone and is generally installed to lengthen a piece of mounted equipment's travel. This track is suitable for wall, ceiling and bench top applications.



	IMPERIAL	METRIC
Part Number	0480108	
Dimensions	W 7.4 in D 0.5 in L 40 in	W 189 mm D 12.7 mm L 1016 mm
Weight	7.5 lb	3.4 kg
Load Capacity	220.4 lb	100 kg
Crash Tested	10g, 22g, 26g	

KEY

(W) Width is measured as 'Y' axis in relation to mounting to the track
 (D) Depth is measured as 'Z' axis in relation to mounting to the track
 (L) Length is measured as 'X' axis in relation to mounting to the track

Track System | 1016 Centre
Drop-in

This track is suitable for wall, ceiling and bench top applications. It has a single drop in zone located in the centre of the track. This allows more flexibility and choice when designing your ambulance.



	IMPERIAL	METRIC
Part Number	0480171	
Dimensions	W 7.4 in D 0.5 in L 40 in	W 189 mm D 12.7 mm L 1016 mm
Weight	7.5 lb	3.4 kg
Load Capacity	220.4 lb	100 kg
Crash Tested	10g, 22g, 26g	

KEY

- (W) Width is measured as 'Y' axis in relation to mounting to the track
- (D) Depth is measured as 'Z' axis in relation to mounting to the track
- (L) Length is measured as 'X' axis in relation to mounting to the track

End Caps | Regular

End caps are used to fill an end of the track and can be removed if the track is to be extended.



	IMPERIAL	METRIC
Part Number	0480002 Grey: 0480003 White: 0480004	
Dimensions	W 7.4 in D 1.9 in L .7 in	W 193 mm D 3 mm L 17 mm
Weight	.605 lb	90 g
Crash Tested	10g, 22g, 26g	

End Caps | Thin

Thin end caps are used to fill an end of the track and can be removed if the track is to be extended. Thin end caps are used where the track end is close to a wall or requires mounts to be still entered from though the end cap.



	IMPERIAL	METRIC
Part Number	0480049 Grey: 0480050 White: 0480051	
Dimensions	W 7.4 in D 1.9 in L .7 in	W 193 mm D 48 mm L 17 mm
Weight	.605 lb	275 g
Crash Tested	10g, 22g, 26g	

KEY

- (W) Width is measured as 'Y' axis in relation to mounting to the track
- (D) Depth is measured as 'Z' axis in relation to mounting to the track
- (L) Length is measured as 'X' axis in relation to mounting to the track

T-Splice Caps

T-Splice Caps are used where horizontal and vertical track meet.



	IMPERIAL	METRIC
Part Number 0480005 Grey: 0480006 White: 0480007		
Dimensions	W 7.6 in D .9 in L .6 in	W 193 mm D 24 mm L 16 mm
Weight	.14lb	64 g
Crash Tested	10g, 22g, 26g	

KEY

- (W) Width is measured as 'Y' axis in relation to mounting to the track
- (D) Depth is measured as 'Z' axis in relation to mounting to the track
- (L) Length is measured as 'X' axis in relation to mounting to the track

Track Connectors

SafeMount | Threaded (25kg)

This SafeMount with a 25kg load capacity is our most popular mount. It can be used to mount a variety of equipment.



	IMPERIAL	METRIC
Part Number	0480010	
Dimensions	W 5.9 in D 1.4 in L 6.6 in	W 151 mm D 34.5 mm L 167 mm
Weight	1.86 lb	.845 kg
Load Capacity	55.1 lb	25 kg
Crash Tested	10g, 22g, 26g	

SafeMount | Threaded (12kg)

The 12kg capacity SafeMount while lesser in capacity functions the same as the 25kg version. It can be used to mount a variety of equipment.



	IMPERIAL	METRIC
Part Number	0480146	
Dimensions	W 5.9 in D 1.6 in L 6.6 in	W 151 mm D 40 mm L 167 mm
Weight	1.6 lb	.74 kg
Load Capacity	26.5 lb	12 kg
Crash Tested	10g, 22g, 26g	

KEY

(W) Width is measured as 'Y' axis in relation to mounting to the track
 (D) Depth is measured as 'Z' axis in relation to mounting to the track
 (L) Length is measured as 'X' axis in relation to mounting to the track

Track Connectors

SafeMount | With Connector

The connector in this SafeMount provides an alternative to mounting the equipment directly to the SafeMount providing the ability to remove the equipment at short notice.



	IMPERIAL	METRIC
Part Number	0480011	
Dimensions	W 7.4 in D 1.9 in L 6.6 in	W 187 mm D 48.5 mm L 167 mm
Weight	1.65 lb	.75 kg
Load Capacity	22 lb	10 kg
Crash Tested	10g, 22g, 26g	

Track Clip

Track clips provide a suitable area on the track to attach equipment or strapping points.



	IMPERIAL	METRIC
Part Number	0480008	
Dimensions	W 2.7 in D 1.6 in L 1.6 in	W 69 mm D 40.5 mm L 41.5 mm
Weight	.2 lb	.08kg
Load Capacity	5 lb	2.27 kg
Crash Tested	10g, 22g, 26g	

KEY

(W) Width is measured as 'Y' axis in relation to mounting to the track
 (D) Depth is measured as 'Z' axis in relation to mounting to the track
 (L) Length is measured as 'X' axis in relation to mounting to the track

SafePak Mount, SafePaks & SafeCabs

SafePak | Mount

The SafePak Mount provides the area to secure the small and regular size SafePaks.



	IMPERIAL	METRIC
Part Number	0480022	
Dimensions	W 43.9 in D 2 in L 19 in	W 1114 mm D 50 mm L 485 mm
Weight	12.79 lb	5.8 kg
Load Capacity	26.5 lb	12 kg
Crash Tested	10g, 22g, 26g	

SafePak | SafePak Multi-Mount - 3-Row (SafeMount included)

The SafePak Mount provides the area to secure the small and regular size SafePaks. This has many location options for greater flexibility.



	IMPERIAL	METRIC
Part Number	0480193	
Dimensions	W 16.7 in D 1.1 in L 23.6 in	W 425 mm D 30 mm L 600 mm
Weight	7.3 lb	3.3 kg
Load Capacity	26.5 lb	12 kg
Crash Tested	10g, 22g, 26g	
	<ul style="list-style-type: none"> • Safemount supplied with 0480193 • Refer to separate operators manual 	

KEY

(W) Width is measured as 'Y' axis in relation to mounting to the track
 (D) Depth is measured as 'Z' axis in relation to mounting to the track
 (L) Length is measured as 'X' axis in relation to mounting to the track

SafePak Mount, SafePaks & SafeCabs

SafePak | SafePak Multi-Mount 3-Row (Base Plate Only)

The SafePak Mount provides the area to secure the small and regular size SafePaks. This has many location options for greater flexibility.



	IMPERIAL	METRIC
Part Number	0480209	
Dimensions	W 16.7 in D 1.1 in L 23.6 in	W 425 mm D 30 mm L 600 mm
Weight	5 lb	2.3 kg
Load Capacity	26.5 lb	12 kg
Crash Tested	10g, 22g, 26g	
	<ul style="list-style-type: none"> • No Safemount supplied with 0480209 • Refer to separate operators manual 	

KEY

(W) Width is measured as 'Y' axis in relation to mounting to the track
 (D) Depth is measured as 'Z' axis in relation to mounting to the track
 (L) Length is measured as 'X' axis in relation to mounting to the track

SafePak Mount, SafePaks & SafeCabs

SafePak | Small

The small SafePak allows the user to securely stow 2 small SafePaks per SafePak mount. All SafePaks are removable allowing for a comprehensive kit to be taken to the scene or patient outside of the vehicle. Safepaks come complete with a full set of pouches as shown.



	IMPERIAL	METRIC
Part Number	Red: 0480023 Blue: 0480077 White: 0480090	
Dimensions	W 12.8 in D 9.4 in L 18.1 in	W 325 mm D 240 mm L 460 mm
Weight	11.1 lb	5.03 kg
Load Capacity	17 lb	8 kg
Crash Tested	10g, 22g, 26g	

SafePak | Regular

The regular SafePak provides ample space to install pouches with the flexibility of removing the SafePak from the wall to attend scenes located outside of the vehicle. Safepaks come complete with a full set of pouches as shown.



	IMPERIAL	METRIC
Part Number	Red: 0480024 Blue: 0480059 White: 0480060	
Dimensions	W 18.9 in D 9.4 in L 18.1 in	W 481 mm D 240 mm L 460 mm
Weight	16.9 lb	7.66 kg
Load Capacity	25 lb	11.34 kg
Crash Tested	10g, 22g, 26g	

KEY

(W) Width is measured as 'Y' axis in relation to mounting to the track
 (D) Depth is measured as 'Z' axis in relation to mounting to the track
 (L) Length is measured as 'X' axis in relation to mounting to the track

SafePak Mount, SafePaks & SafeCabs

SafeCab | Small

Installed on INTRAXX, the small SafeCab provides an area for small items to be safely secured during transit. All SafeCabs have the ability to display tamper evidence with the right locking lever displaying green for untampered or red for tampered. 0480085 is Bulkhead compliant.



	IMPERIAL	METRIC
Part Number	0480085	
Dimensions	W 13.8 in D 13 in L 21.5 in	W 350 mm D 330 mm L 545 mm
Weight	29.8 lb	13.5 kg
Load Capacity	11 lb	5 kg
Crash Tested	10g, 22g, 26g	

SafeCab | Medium

Installed on INTRAXX, the medium SafeCab provides area for items to be safely secured during transit. Our most popular choice in SafeCabs.



	IMPERIAL	METRIC
Part Number	0480086	
Dimensions	W 13.8 in D 13 in L 31.5 in	W 350 mm D 330 mm L 800 mm
Weight	36.4 lb	16.5 kg
Load Capacity	17.6 lb	8 kg
Crash Tested	10g, 22g, 26g	

KEY

(W) Width is measured as 'Y' axis in relation to mounting to the track
 (D) Depth is measured as 'Z' axis in relation to mounting to the track
 (L) Length is measured as 'X' axis in relation to mounting to the track

SafePak Mount, SafePaks & SafeCabs

SafeCab | Large

Installed on IN/TRAXX, the largest SafeCab provides sufficient area to store those longer awkward items that need to be safely secured during transit.



	IMPERIAL	METRIC
Part Number	0480087	
Dimensions	W 13.8 in D 13 in L 46.5 in	W 350 mm D 330 mm L 1180 mm
Weight	51.8 lb	23.5 kg
Load Capacity	26.5 lb	12 kg
Crash Tested	10g, 22g, 26g	

KEY

- (W) Width is measured as 'Y' axis in relation to mounting to the track
- (D) Depth is measured as 'Z' axis in relation to mounting to the track
- (L) Length is measured as 'X' axis in relation to mounting to the track

SafePak Pouches

SafePak Pouch | Small

All pouches are capable of displaying the contents. Pouches can be labelled using label sheets available separately. This option uses half of a Pouch Carrier. See Pt No 0480030 for Pouch Mount Carrier.



	IMPERIAL	METRIC
Part Number	0480026	
Dimensions	W 4.7 in D 2.8 in L 3.9 in	W 120 mm D 70 mm L 100 mm
Weight	.3 lb	.136 kg
Load Capacity	.5 lb	.226 kg
Crash Tested	10g, 22g, 26g	
	<ul style="list-style-type: none"> • Pack of 2 • Label Sheets for Small Pouch available (2381858) 	

SafePak Pouch | Medium

All pouches are capable of displaying the contents. Pouches can be labelled using label sheets available separately. The medium option introduces the ability to divide the pouch into equal parts via the SafePak Pouch Divider. The medium takes up 1 pouch carrier.



	IMPERIAL	METRIC
Part Number	0480027	
Dimensions	W 4.7 in D 2.8 in L 7.9 in	W 120 mm D 70 mm L 200 mm
Weight	.6 lb	.25 kg
Load Capacity	2.5 lb	1.13 kg
Crash Tested	10g, 22g, 26g	
	<ul style="list-style-type: none"> • Pack of 2 • Label Sheets for Small Pouch available (2381858) 	

KEY

(W) Width is measured as 'Y' axis in relation to mounting to the track
 (D) Depth is measured as 'Z' axis in relation to mounting to the track
 (L) Length is measured as 'X' axis in relation to mounting to the track

SafePak Pouches

SafePak Pouch | Large Vertical

All pouches are capable of displaying the contents. Pouches can be labelled using label sheets available separately. The large vertical pouch uses 2 pouch carriers and has provision for use of the Pouch Divider.



	IMPERIAL	METRIC
Part Number	0480028	
Dimensions	W 10.2 in D 2.8 in L 7.9 in	W 260 mm D 70 mm L 200 mm
Weight	.9 lb	.4 kg
Load Capacity	4.5 lb	2.04 kg
Crash Tested	10g, 22g, 26g	
	<ul style="list-style-type: none"> • Pack of 2 • Label Sheets for Medium Pouch available (2381859) 	

SafePak Pouch | Large Horizontal

All pouches are capable of displaying the contents. Pouches can be labelled using label sheets available separately. The large horizontal pouch uses 2 Pouch Carriers. This pouch can be used with the Pouch Divider to make up to 4 compartments within.



	IMPERIAL	METRIC
Part Number	0480029	
Dimensions	W 4.7 in D 2.8 in L 15.7 in	W 120 mm D 70 mm L 400 mm
Weight	0.9 lb	.4 kg
Load Capacity	4.5 lb	2.04 kg
Crash Tested	10g, 22g, 26g	
	<ul style="list-style-type: none"> • Pack of 2 • Label Sheets for Large Pouch available (2381860) 	

KEY

(W) Width is measured as 'Y' axis in relation to mounting to the track
 (D) Depth is measured as 'Z' axis in relation to mounting to the track
 (L) Length is measured as 'X' axis in relation to mounting to the track

SafePak Pouches

SafePak Pouch | Medium Mesh

Medium Mesh SafePak Pouches are essentially a one-handed operation proving to be the quickest and easiest pouches to access. Uses 1 Pouch Carrier with no Pouch Divider.



	IMPERIAL	METRIC
Part Number	0480092	
Dimensions	W 4.7 in D Expandable to 4 in L 7.9 in	W 120 mm D 101.6 mm L 200 mm
Weight	.434 lb	.197 kg
Load Capacity	2.5 lb	1.13 kg
	<ul style="list-style-type: none"> • Pack of 2 • Pictured with Spiracle disposable BVM 	

SafePak Pouch Divider

Used in the medium and large pouches and provides the ability to divide a pouch into different areas.



	IMPERIAL	METRIC
Part Number	0480072	
Dimensions	W 3.9 in D 22.5 in L 1.57 in	W 99 mm D 64.8 mm L 40 mm
	<ul style="list-style-type: none"> • Pack of 8 	

KEY

(W) Width is measured as 'Y' axis in relation to mounting to the track
 (D) Depth is measured as 'Z' axis in relation to mounting to the track
 (L) Length is measured as 'X' axis in relation to mounting to the track

SafePak Pouches

SafePouch | Small Jumbo

All pouches are capable of displaying the contents. Pouches can be labelled using sheets available separately. This option uses half a pouch mount carrier plates (#0480030), see SafePak Pouch Mounts for multiple options.



	IMPERIAL	METRIC
Part Number	0480173	
Dimensions	W 4.7 in D 4.7 L 3.9 in	W 120 mm D 120 mm L 100 mm
Weight	.36 lb	.16 kg
Load Capacity	.5 lb	.22 kg
Crash Tested	10g, 20g, 26g	
	<ul style="list-style-type: none"> • Pack of 2 • Label Sheets for Small Pouch available (2381858) • Contact sales rep for custom labels 	

SafePouch | Medium Jumbo

All pouches are capable of displaying the contents. Pouches can be labelled using sheets available separately. This option uses one pouch mount carrier plate (#0480030), see SafePak Pouch Mounts for multiple options.



	IMPERIAL	METRIC
Part Number	0480174	
Dimensions	W 4.7 in D 4.7 L 7.9 in	W 120 mm D 120 mm L 200 mm
Weight	.6 lb	.25 kg
Load Capacity	2.5 lb	1.13 kg
Crash Tested	10g, 20g, 26g	
	<ul style="list-style-type: none"> • Pack of 2 • Label Sheets for MediumPouch available (2381859) • Contact sales rep for custom labels 	

KEY

(W) Width is measured as 'Y' axis in relation to mounting to the track
 (D) Depth is measured as 'Z' axis in relation to mounting to the track
 (L) Length is measured as 'X' axis in relation to mounting to the track

SafePak Pouches

SafePouch | Large Vertical Jumbo

All pouches are capable of displaying the contents. Pouches can be labelled using sheets available separately. This option uses two pouch mount carrier plates (#0480030), see SafePak Pouch Mounts for multiple options.



	IMPERIAL	METRIC
Part Number	0480175	
Dimensions	W 10.2 in D 4.7 L 7.9 in	W 260 mm D 120 mm L 200 mm
Weight	1 lb	.47 kg
Load Capacity	4.5 lb	2 kg
Crash Tested	10g, 20g, 26g	
	<ul style="list-style-type: none"> • Pack of 2 • Label Sheets for Medium Pouch available (2381859) • Contact sales rep for custom labels 	

SafePouch | Large Horizontal Jumbo

All pouches are capable of displaying the contents. Pouches can be labelled using sheets available separately. This option uses two pouch mount carrier plates (#0480030), see SafePak Pouch Mounts for multiple options.



	IMPERIAL	METRIC
Part Number	0480176	
Dimensions	W 4.7 in D 4.7 L 15.7 in	W 120 mm D 120 mm L 400 mm
Weight	1 lb	.47 kg
Load Capacity	4.5 lb	2 kg
Crash Tested	10g, 20g, 26g	
	<ul style="list-style-type: none"> • Pack of 2 • Label Sheets for Large Pouch available (2381860) • Contact sales rep for custom labels 	

KEY

(W) Width is measured as 'Y' axis in relation to mounting to the track
 (D) Depth is measured as 'Z' axis in relation to mounting to the track
 (L) Length is measured as 'X' axis in relation to mounting to the track

SafePak Pouches

SafePouch | Dual Large Vertical Jumbo

All pouches are capable of displaying the contents. Pouches can be labelled using sheets available separately. This option uses four pouch mount carrier plates (#0480030), see SafePak Pouch Mounts for multiple options.



	IMPERIAL	METRIC
Part Number	0480177	
Dimensions	W 10.2 in D 4.7 L 15.7 in	W 260 mm D 120 mm L 400 mm
Weight	1.8 lb	.85 kg
Load Capacity	8.8 lb	4 kg
Crash Tested	10g, 20g, 26g	
	<ul style="list-style-type: none"> • Pack of 2 • Label Sheets for Medium Pouch available (2381859) • Contact sales rep for custom labels 	

SafePouch | 1.5 Large Horizontal Jumbo (special orders only)

All pouches are capable of displaying the contents. Pouches can be labelled using sheets available separately. This option uses four pouch mount carrier plates (#0480030), see SafePak Pouch Mounts for multiple options.



	IMPERIAL	METRIC
Part Number	0480178	
Dimensions	W 4.7 in D 4.7 L 23.6 in	W 120 mm D 120 mm L 600 mm
Weight	1.4 lb	.65 kg
Load Capacity	4.5 lb	2 kg
Crash Tested	10g, 20g, 26g	
	<ul style="list-style-type: none"> • Pack of 2 • Label Sheets for Large Pouch available (2381860) • Contact sales rep for custom labels 	

KEY

(W) Width is measured as 'Y' axis in relation to mounting to the track
 (D) Depth is measured as 'Z' axis in relation to mounting to the track
 (L) Length is measured as 'X' axis in relation to mounting to the track

SafePak Pouch Mounts

Pouch Mount Carrier | Single

Pouch Mount Carriers are used in the SafePaks, Pouch Track Mounts, Pouch Mount Plates.



	IMPERIAL	METRIC
Part Number	0480030	
Dimensions	W 4.6 in D 0.6 in L 7.5 in	W 118 mm D 15 mm L 190 mm
Weight	.233 lb	.106 kg
Load Capacity	5 lb	2.4 kg
Crash Tested	10g, 22g, 26g	

Pouch Track Mount | Single

The Single Track Mount has the ability to be installed anywhere on the IN/TRAXX Track. It will accept and support the small and medium pouches.



	IMPERIAL	METRIC
Part Number	0480031	
Dimensions	W 4.6 in D 0.6 in L 7.5 in	W 125 mm D 53.9 mm L 290 mm
Weight	1.59 lb	.725 kg
Load Capacity	5 lb	2.4 kg
Crash Tested	10g, 22g, 26g	

KEY

(W) Width is measured as 'Y' axis in relation to mounting to the track
 (D) Depth is measured as 'Z' axis in relation to mounting to the track
 (L) Length is measured as 'X' axis in relation to mounting to the track

SafePak Pouch Mounts

Pouch Track Mount |

Double Vertical

The Double Vertical mount also provides the flexibility to install anywhere and will accept and support 2 medium, 1 Large Vertical or 4 Small pouches.



	IMPERIAL	METRIC
Part Number	0480032	
Dimensions	W 10.6 in D 2.1 in L 11.4 in	W 268 mm D 53.9 mm L 290 mm
Weight	2.7 lb	1.23 kg
Load Capacity	5.1 lb	2.4 kg
Crash Tested	10g, 22g, 26g	

Pouch Track Mount |

Double Horizontal

This mount provides 2 carriers capable of securing the Small, Medium and Large Horizontal pouches.



	IMPERIAL	METRIC
Part Number	0480083	
Dimensions	W 4.9 in D 2.1 in L 21.5 in	W 125 mm D 53.9 mm L 545 mm
Weight	2.2 lb	1.14 kg
Load Capacity	5 lb	2.4 kg
Crash Tested	10g, 22g, 26g	

KEY

(W) Width is measured as 'Y' axis in relation to mounting to the track
 (D) Depth is measured as 'Z' axis in relation to mounting to the track
 (L) Length is measured as 'X' axis in relation to mounting to the track

SafePak Pouch Mounts

Pouch Mount Plate | 3T2

The 6 carriers can take a multitude of pouches increasing the flexibility of your storage options. The Pouch Mount Plates are installed directly to the wall of the vehicle.



	IMPERIAL	METRIC
Part Number	0480155	
Dimensions	W 17.8 in D 1.1 in L 16.4 in	W 453 mm D 28.5 mm L 416 mm
Weight	4.2 lb	1.9 kg
Load Capacity	20.6 lb	9.35 kg
Crash Tested	10g, 22g, 26g	

Pouch Mount Plate | 4T2

The largest mount with 8 carriers can be setup to hold any pouch and can be configured easily within the vehicle.



	IMPERIAL	METRIC
Part Number	0480160	
Dimensions	W 23.1 in D 1.1 in L 16.4 in	W 588 mm D 28.5 mm L 416 mm
Weight	5.42 lb	2.46 kg
Load Capacity	27.4 lb	12.44 kg
Crash Tested	10g, 22g, 26g	

KEY

(W) Width is measured as 'Y' axis in relation to mounting to the track
 (D) Depth is measured as 'Z' axis in relation to mounting to the track
 (L) Length is measured as 'X' axis in relation to mounting to the track

SafePak Pouch Mounts

Pouch Mount Plate | 2T2

The plate has 4 carriers which provide area for the largest to the smallest pouches in the range.



	IMPERIAL	METRIC
Part Number	0480161	
Dimensions	W 11.7 in D 1.1 in L 16.4 in	W 298 mm D 28.5 mm L 416 mm
Weight	2.8 lb	1.25 kg
Load Capacity	13.7 lb	6.22 kg
Crash Tested	10g, 22g, 26g	

Pouch Mount Plate | 1T2

Able to be installed in tight areas of the vehicle, this mount plate provides storage in areas that would not usually be used.



	IMPERIAL	METRIC
Part Number	0480162	
Dimensions	W 7.2 in D 1.1 in L 16.4 in	W 183 mm D 28.5 mm L 416 mm
Weight	1.6 lb	.72 kg
Load Capacity	7.07 lb	3.11 kg
Crash Tested	10g, 22g, 26g	

KEY

(W) Width is measured as 'Y' axis in relation to mounting to the track
 (D) Depth is measured as 'Z' axis in relation to mounting to the track
 (L) Length is measured as 'X' axis in relation to mounting to the track

Pouch Mount Plates

Pouch Mount |

Track Adaptor - Pouch Mount Plate

The Track Adaptor is used to mount Pouch Mount Plates part numbers, 04800160, 0480155, 0480161 and 0480162 to vehicles walls that utilize iN/TRAXX track. the Track Adaptor gives flexibility of location and height when configuring your vehicle.



	IMPERIAL	METRIC
Part Number	0480191	
Dimensions	W 7.2 in D 2.1 in L 22.2 in	W 183 mm D 54 mm L 564 mm
Weight	2.73 lb	1.24 kg
Load Capacity	35 lb	16 kg
Crash Tested	10g, 22g, 26g	
	<ul style="list-style-type: none"> • 0480191 Track Adaptors sold separately • Pouch Mount Plates sold separately • Designed to be mounted in horizontal track only • Please refer to separate operators manual 	

KEY

(W) Width is measured as 'Y' axis in relation to mounting to the track
 (D) Depth is measured as 'Z' axis in relation to mounting to the track
 (L) Length is measured as 'X' axis in relation to mounting to the track

Defibrillator Mounts

Defibrillator Mounts |

LifePak 15

The LifePak series of mounting solutions provide the user with a secure and adjustable solution on a vertical or horizontal surface of IN/TRAXX. The multipurpose mount aids in user preference with an option to have both mounts attached to the Defibrillator Mount should the need arise to move the mount from a Horizontal to Vertical surface or vice versa.

- Defibrillator Wall Mount-LifePak 15**
- Defibrillator Swivel Mount-LifePak 15**
- Defibrillator Wall+Swivel Mount-LifePak 15**

Defibrillator Wall Mount |

LifePak 15



	IMPERIAL	METRIC
Part Number	0480013	
Dimensions	W 14 in D 12.6 in L 8.3 in	W 356 mm D 321 mm L 210 mm
Weight	14.8 lb	6.7 kg
Crash Tested	10g, 22g, 26g	
• Compatible with LifePak 15 (with or without case)		

Defibrillator Swivel Mount |

LifePak 15



	IMPERIAL	METRIC
Part Number	0480014	
Dimensions	W 16.3 in D 12 in L 8.3 in	W 415 mm D 304 mm L 210 mm
Weight	16.3 lb	7.4 kg
Crash Tested	10g, 22g, 26g	
• Compatible with LifePak 15 (with or without case)		

KEY

(W) Width is measured as 'Y' axis in relation to mounting to the track
 (D) Depth is measured as 'Z' axis in relation to mounting to the track
 (L) Length is measured as 'X' axis in relation to mounting to the track

Defibrillator Mounts

Defibrillator Wall + Swivel Mount |

LifePak 15



	IMPERIAL	METRIC
Part Number	0480015	
Dimensions	W 16.3 in D 13.5 in L 8.3 in	W 415 mm D 344 mm L 210 mm
Weight	18.3 lb	8.3 kg
Crash Tested	10g, 22g, 26g	
• Compatible with LifePak 15 (with or without case)		

KEY

(W) Width is measured as 'Y' axis in relation to mounting to the track

(D) Depth is measured as 'Z' axis in relation to mounting to the track

(L) Length is measured as 'X' axis in relation to mounting to the track

Defibrillator Mounts

Defibrillator Mounts |

Zoll X Series

The Zoll X series of mounting solutions provide the user with a secure and adjustable solution on a vertical or horizontal surface of IN/TRAXX. The multipurpose mount aids in user preference with an option to have both mounts attached to the Defibrillator Mount should the need arise to move the mount from a horizontal to vertical surface or vice versa.

Defibrillator Wall Mount- Zoll X Series

Defibrillator Swivel Mount- Zoll X Series

Defibrillator Wall+Swivel Mount- Zoll X Series

Defibrillator Wall Mount |

Zoll X Series



	IMPERIAL	METRIC
Part Number	0480019	
Dimensions	W 11.1 in D 11.2 in L 8.3 in	W 282 mm D 285 mm L 210 mm
Weight	12.3 lb	5.6 kg
Crash Tested	10g, 22g, 26g	
	• Compatible with Zoll X Soft-Case (including rear pouch)	

Defibrillator Swivel Mount |

Zoll X Series



	IMPERIAL	METRIC
Part Number	0480020	
Dimensions	W 13.5 in D 10.4 in L 8.3 in	W 342 mm D 265 mm L 210 mm
Weight	17.4 lb	7.9 kg
Crash Tested	10g, 22g, 26g	
	• Compatible with Zoll X Soft-Case (including rear pouch)	

KEY

(W) Width is measured as 'Y' axis in relation to mounting to the track

(D) Depth is measured as 'Z' axis in relation to mounting to the track

(L) Length is measured as 'X' axis in relation to mounting to the track

Defibrillator Mounts

Defibrillator Wall + Swivel Mount |

Zoll X Series



	IMPERIAL	METRIC
Part Number	0480021	
Dimensions	W 13.5 in D 12 in L 8.3 in	W 342 mm D 305 mm L 210 mm
Weight	19.4 lb	8.8 kg
Crash Tested	10g, 22g, 26g	
• Compatible with Zoll X Soft Case (including rear pouch)		

Defibrillator Mount | Zoll iN/TRAXX Wall Mount (Charging)

The iN/TRAXX wall mounted Zoll defibrillator holder is the first of its generation with unparalleled versatility. It is supplied with the easy dock system, charging capability and mounted to iN/TRAXX. Fits with the standard Zoll bag to carry accessories.



	IMPERIAL	METRIC
Part Number	0480197	
Dimensions	W 8.2 in D 11.8 in L 6.2 in	W 210 mm D 300 mm L 160 mm
Weight	8.1 lb	3.7 kg
Load Capacity	26.4 lb	12 kg
Crash Tested	10g, 20g, 26g	
Standards/Certifications	AS/NZS 4535:1999, FMVSS / CAAS, CEN 1789, SAE J3042	
<ul style="list-style-type: none"> • Supplied as a kit including Zoll mount, Zoll charge adaptor, bolts for Safemount • Refer to separate operators manual • Safemount is sold separately, either 0480010 or 0480146 Safemounts can be used. • Zoll bag is not included 		

KEY

(W) Width is measured as 'Y' axis in relation to mounting to the track
 (D) Depth is measured as 'Z' axis in relation to mounting to the track
 (L) Length is measured as 'X' axis in relation to mounting to the track

Defibrillator Mounts

Defibrillator Mount |

Zoll X Direct Wall Mount (Charging)

The Direct Wall Mounted Zoll X defib holder is the first of its generation. Supplied with the easy dock system, charging capability and mounted direct to any vertical surface, never has a mounting system been so versatile. Fits with the standard Zoll bag to carry all your accessories.



	IMPERIAL	METRIC
Part Number	0480217	
Dimensions	W 8.2 in D 11.81 in L 6.2 in	W 210 mm D 300 mm L 100 mm
Weight	3.9 lb	2.8 kg
Load Capacity	26.4 lb	12 kg
Crash Tested	10g, 22g, 26g	
	<ul style="list-style-type: none"> • Supplied as a kit including Zoll Mount, Zoll charge adaptor and bolts. • Refer to separate operators manual • Zoll bag is not included 	

KEY

(W) Width is measured as 'Y' axis in relation to mounting to the track
 (D) Depth is measured as 'Z' axis in relation to mounting to the track
 (L) Length is measured as 'X' axis in relation to mounting to the track

Defibrillator Mounts

Defibrillator Mounts |

Corpuls 3

The Corpuls3 series of mounting solutions provide the user with a secure and adjustable solution on a vertical or horizontal surface of IN/TRAXX. The multipurpose mount aids in user preference with an option to have both mounts attached to the Defibrillator Mount should the need arise to move the mount from a horizontal to vertical surface or vice versa.

Please note all mounts use the Corpuls mounting adaptor Charging bracket Defibrillator/Pacer unit 12 V DC obtained separately.

There is also a Wall Mount for the Corpuls Monitor on a telescopic arm.

Defibrillator - Wall Mount – Corpuls3

Defibrillator - Swivel Mount – Corpuls3

Defibrillator - Wall and Swivel Mount – Corpuls3

Monitor – Wall Mount - Corpuls

Defibrillator Wall Mount |

Corpuls 3



	IMPERIAL	METRIC
Part Number	0480056	
Dimensions	W 7.7 in D 3.9 in L 10.3 in	W 196 mm D 98 mm L 261 mm
Weight	3.5 lb	1.59 kg
Crash Tested	10g, 22g, 26g	

KEY

(W) Width is measured as 'Y' axis in relation to mounting to the track

(D) Depth is measured as 'Z' axis in relation to mounting to the track

(L) Length is measured as 'X' axis in relation to mounting to the track

Defibrillator Mounts

Defibrillator Swivel Mount |

Corpuls 3



	IMPERIAL	METRIC
Part Number	0480094	
Dimensions	W 10.3 in D 9.8 in L 10.3 in	W 261 mm D 250 mm L 262 mm
Weight	4.9 lb	2.24 kg
Crash Tested	10g, 22g, 26g	

Defibrillator Wall + Swivel Mount |

Corpuls 3



	IMPERIAL	METRIC
Part Number	0480095	
Dimensions	W 10.3 in D 10.5 in L 10.3 in	W 261 mm D 266 mm L 262 mm
Weight	7.6 lb	3.44 kg
Crash Tested	10g, 22g, 26g	

Defibrillator Wall Mount |

Corpuls Monitor



	IMPERIAL	METRIC
Part Number	0480093	
Dimensions	W 7.8 in D 3.9 in L 6.6 in	W 199 mm D 98 mm L 167 mm
Weight	2.9 lb	1.3 kg
Crash Tested	10g, 22g, 26g	

KEY

(W) Width is measured as 'Y' axis in relation to mounting to the track
 (D) Depth is measured as 'Z' axis in relation to mounting to the track
 (L) Length is measured as 'X' axis in relation to mounting to the track

Defibrillator Mounts

Defibrillator Wall Mount |

Physio LP1000 AED

Specifically built for the Physio LP1000, this wall mount provides mounting solutions for the defibrillator into the IN/TRAXX.



	IMPERIAL	METRIC
Part Number	0480084	
Dimensions	W 7.7 in D 2.4 in L 10 in	W 196 mm D 62 mm L 253 mm
Weight	3.1 lb	1.4 kg
Crash Tested	10g, 22g, 26g	

Defibrillator Wall Mount |

ProPaq PD360

This wall mount provides the platform for installation of the Zoll or Hamilton T1 or any other aviation products that use the D360 system. Zoll adaptor to fit the PD360 defibrillator. See Pt 0480156 for adaptor.



	IMPERIAL	METRIC
Part Number	0480151	
Dimensions	W 5.9 in D 15.1 in L 6.6 in	W 151 mm D 384 mm L 167 mm
Weight	4 lb	1.8 kg
Crash Tested	10g	

• Pictured with #0480156 Zoll adaptor. Sold separately

KEY

(W) Width is measured as 'Y' axis in relation to mounting to the track
 (D) Depth is measured as 'Z' axis in relation to mounting to the track
 (L) Length is measured as 'X' axis in relation to mounting to the track

Defibrillator Mounts

Defibrillator Counter Top Mount | D360

The D360 base is designed to be an all purpose mount. In order to use the D360 base with your equipment, you must purchase an equipment specific adaptor (sold separately).



	IMPERIAL	METRIC
Part Number	0480184	
Dimensions	W 7.6 in D 1.45 in L 7.2 in	W 195 mm D 37 mm L 185 mm
Weight	1.9 lb	.89 kg
Crash Tested	10g, 20g	
<ul style="list-style-type: none"> • Must be used in conjunction with Ferno D30d equipment Specific adaptors, sold separately. - review users manual 		

D360 ProPac/ZOLL Adaptor |

The adaptor provides the interface between the mount and the defibrillator.



	IMPERIAL	METRIC
Part Number	0480156	
Dimensions	W 1.6 in D 4.5 in L 7.1 in	W 41 mm D 114 mm L 180 mm
Weight	3.7 lb	1.7 kg
Crash Tested	10g, 22g	
<ul style="list-style-type: none"> • Compatible with D360 ProPac. Sold separately 		

KEY

(W) Width is measured as 'Y' axis in relation to mounting to the track
 (D) Depth is measured as 'Z' axis in relation to mounting to the track
 (L) Length is measured as 'X' axis in relation to mounting to the track

Defibrillator Mounts

Defibrillator Counter Top Mount | D360 Zoll Mount Kit

The D360 Zoll/ProPac Complete Mount Kit is designed to secure the defibrillator with the ability to swivel 360 degrees.



	IMPERIAL	METRIC
Part Number	0480185	
Dimensions	W 7.6 in D 2.3 in L 7.2 in	W 195 mm D 60 mm L 185 mm
Weight	2.8 lb	1.3 kg
Crash Tested	10g, 20g	
	<ul style="list-style-type: none"> • Must be used in conjunction with Ferno D360 equipment specific adaptor • Refer to users manual • Supplied with all the fittings required • Defibrillator sold seperately 	

Defibrillator Mount | D360 LP 15 Adaptor

D360 LP 15 Adaptor

The D360 LP15 a is designed to secure the defibrillator as well as giving the ability to swivel it 360degrees. This part operates with the 0480184 or the 0480151 D360 mounts.



	IMPERIAL	METRIC
Part Number	0480188	
Dimensions	W 16.6 in D 11.5 in L 14.6 in	W 424 mm D 292 mm L 373 mm
Weight	5 lb	2.26 kg
Load Capacity	50 lb	22 kg
Crash Tested	10g, 20g	
	<ul style="list-style-type: none"> • Must be used in conjunction with Ferno D360 equipment equipment mount • Refer to users manual • Supplied with all the fittings required • Defibrillator sold seperately 	

KEY

(W) Width is measured as 'Y' axis in relation to mounting to the track
 (D) Depth is measured as 'Z' axis in relation to mounting to the track
 (L) Length is measured as 'X' axis in relation to mounting to the track

Defibrillator Mounts

Defibrillator Wall Mount |

Tempus LS Kit

The Tempus LS wall mount kit provides the solution to fix the Tempus to iN/TRAXX, the LS smart Dock #01-3012 is not included. The kit comprises of 1 x SafeMount, 1 x spacer plate and 4 x fixing set screws.



	IMPERIAL	METRIC
Part Number	0480180	
Dimensions	W 6.4 in D 6.4 in L 7.6 in	W 165 mm D 165 mm L 185 mm
Weight	1.6 lb	.73 kg
Crash Tested	10g, 20g, 26g	
	<ul style="list-style-type: none"> • Tempus LS Smart Dock #01-3012 sold separately • Follow instructions on assembly process • Refer to Tempus specifications of LS Smart Dock and testing certifications 	

Defibrillator Wall Mount |

Tempus PRO Kit

The Tempus PRO wall mount kit provides the solution to fix the Tempus to iN/TRAXX, the PRO smart Dock #01-2244 is not included. The kit comprises of 1 x SafeMount and 4 x fixing set screws.



	IMPERIAL	METRIC
Part Number	0480181	
Dimensions	W 5.9 in D 6.7 in L 12.2 in	W 151 mm D 171 mm L 310 mm
Weight	1.3 lb	6.1 kg
Crash Tested	10g, 20g, 26g	
	<ul style="list-style-type: none"> • Tempus PRO Smart Dock sold separately • Follow instructions on assembly process • Refer to Tempus specifications of PRO Smart Dock and testing certifications 	

KEY

(W) Width is measured as 'Y' axis in relation to mounting to the track
 (D) Depth is measured as 'Z' axis in relation to mounting to the track
 (L) Length is measured as 'X' axis in relation to mounting to the track

Defibrillator Mounts

Defibrillator Mount |

Zoll AED3

The Zoll AED3 mount is for iN/TRAXX wall track mounting. Can mount into vertical or horizontal track. Zoll AED3 can be locked into this mount with or without its protective carry case.



	IMPERIAL	METRIC
Part Number	0480149	
Dimensions	W 12.2 in D 9 in L 10.2 in	W 312 mm D 229 mm L 260 mm
Weight	5.7 lb	2.6 kg
Load Capacity	7.7 lb	3.5 kg
Crash Tested	10g, 20g, 26g	
	<ul style="list-style-type: none"> • Can be retained in the mount with or without the Zoll AED Case • iN/TRAXX track mount only • Can be supplied as a Cabinet Mount 360 degree on special request • Refer to separate customer drawings for mounting details • Defibrillator not included 	

Defibrillator Mount |

Zoll AED 3 Direct Mount

The Zoll AED3 mount is a direct to wall mounting. No track required. Zoll AED3 can be locked into this mount with or without its protective carry case.



	IMPERIAL	METRIC
Part Number	0480150	
Dimensions	W 12.2 in D 7.5 in L 10.2 in	W 312 mm D 191 mm L 260 mm
Weight	4.1 lb	1.9 kg
Load Capacity	7.7 lb	3.5 kg
Crash Tested	10g, 20g, 26g	
	<ul style="list-style-type: none"> • Can be retained in the mount with or without the Zoll AED Case • Direct to wall mount only • Can be supplied as a Cabinet Mount 360 degree on special request • Refer to separate customer drawings for mounting details • Defibrillator not included 	

KEY

(W) Width is measured as 'Y' axis in relation to mounting to the track
 (D) Depth is measured as 'Z' axis in relation to mounting to the track
 (L) Length is measured as 'X' axis in relation to mounting to the track

Defibrillator Mounts

ACC - Mount | Safe Mount to Aviation D360 Adapter Plate

The Safemount to Aviation D360 Adaptor Plate allows the D360 to be relocatable on iN/TRAXX track. Once the adaptor is used to mount the D360 to a SafeMount it can be bench or PacRac mounted.



	IMPERIAL	METRIC
Part Number	0480198	
Dimensions	W 5.9 in D .31 in L 7.5 in	W 151 mm D 8 mm L 193 mm
Weight	.4 lb	.19 kg
Crash Tested	10g, 20g, 26g	
	<ul style="list-style-type: none"> • Plate is supplied as a kit including bolts • Safemount and D360 not included • Safemount and D360 are sold separately • Refer to separate operators manual for details • Certification falls under the compliance of the SafeMount and Aviation D360 components 	

KEY

(W) Width is measured as 'Y' axis in relation to mounting to the track
 (D) Depth is measured as 'Z' axis in relation to mounting to the track
 (L) Length is measured as 'X' axis in relation to mounting to the track

Oxygen Mount |

CD O2 single Cylinder Mount

The CD O2 single Cylinder Mount is unique in its design, it can be mounted to the iN/TRAXX in a single cylinder mount or optioned up to carry 2 or 3 cylinders.



	IMPERIAL	METRIC
Part Number	0480163	
Dimensions	W 19.68 in D 5.11 in L 6.57 in	W 500 mm D 130 mm L 167 mm
Weight	6.04 lb	2.74 kg
Crash Tested	10g, 22g, 26g	
	<ul style="list-style-type: none"> • Weight does not include oxygen cylinders • Compatible with: Euro size "C" oxygen Bottle, Inhalo oxygen bottle or US Jumbo "D" • Please refer to separate operators manual 	

Oxygen Mount |

CD O2 Mount Bracket Only

The CD O2 Mount bracket is sold separately. Single sale allows the ability to build your system. Certification is covered only under the complete assembly. Please refer to the user manual.



	IMPERIAL	METRIC
Part Number	0480127	
Dimensions	W 19.68 in D 5.59 in L 0.39in	W 500 mm D 142 mm L 10 mm
Weight	2.2 lb	1 kg
Crash Tested	10g, 22g, 26g	
	<ul style="list-style-type: none"> • Please refer to separate operators manual 	

KEY

(W) Width is measured as 'Y' axis in relation to mounting to the track
 (D) Depth is measured as 'Z' axis in relation to mounting to the track
 (L) Length is measured as 'X' axis in relation to mounting to the track

Oxygen

Oxygen Mount | CD O2

Cylinder bracket only

The CD O2 Mount bracket is sold separately. Single sale allows the ability to build your system. Certification is covered only under the complete assembly.



	IMPERIAL	METRIC
Part Number	0480128	
Dimensions	W 19.7 in D 5.6 in L 0.39 in	W 500 mm D 142 mm L 10 mm
Weight	2.2 lb	1 kg
Crash Tested	10g, 22g, 26g	
	<ul style="list-style-type: none"> • Weight does not include oxygen cylinder • Mount is compatible with Euro size "C" oxygen Bottle, Inhalo oxygen bottle or US Jumbo "D". Sold separately • Please refer to separate operators manual 	

Oxygen Mount | Single

The Single Oxygen Mount is designed to support a D or Jumbo D size oxygen bottle.



	IMPERIAL	METRIC
Part Number	0480034	
Dimensions	W 18.9 in D 8.3 in L 6.6 in	W 480 mm D 210 mm L 167 mm
Weight	4 lb	2.2 kg
Crash Tested	10g, 22g, 26g	
	<ul style="list-style-type: none"> • Weight does not include oxygen cylinder. • Compatible with "D" or Jumbo "D" tanks. Sold separately. 	

KEY

(W) Width is measured as 'Y' axis in relation to mounting to the track
 (D) Depth is measured as 'Z' axis in relation to mounting to the track
 (L) Length is measured as 'X' axis in relation to mounting to the track

Oxygen

Oxygen Mount | Double

The Double Oxygen System is designed to hold up to two M60 oxygen cylinders and extends the time between refills or provision of oxygen to multiple patients. Can be easily removed from the iN/TRAXX for use outside of the vehicle.



	IMPERIAL	METRIC
Part Number	i. 048-0126 #T70710, iN/TRAXX Oxygen System ii. 048-0158 #T70710-T, iN/TRAXX Oxy System - w/Pres	
Dimensions	W 34.5 in D 8.9 in L 17.8 in	W 876 mm D 226 mm L 451 mm
Weight	34 lb	15.4 kg
Crash Tested	10g, 22g, 26g	
	<ul style="list-style-type: none"> • Weight does not include oxygen cylinders • Compatible with: <ul style="list-style-type: none"> Spiracle EE-Lite tanks (#0819994) combined with Model 804 Regulator (081-9567) Spiracle M60 Aluminum Tank (#0822502) • Both sold separately 	

Oxygen Mount | Triple

The Triple Oxygen System is designed to hold up to three EE-Lite oxygen cylinders and extends the time between refills or provision of oxygen to multiple patients. Can be removed from the iN/TRAXX for use outside of the vehicle.



	IMPERIAL	METRIC
Part Number	0480035	
Dimensions	W 28.7 in D 9.1 in L 27 in	W 730 mm D 230 mm L 686 mm
Weight	50 lb	22.68 kg
Crash Tested	10g, 22g, 26g	
	<ul style="list-style-type: none"> • Weight does not include oxygen cylinders • Compatible with Spiracle EE-Lite tanks (081-9589) combined with Model 804 Regulator (081-9567). Both sold separately 	

KEY

(W) Width is measured as 'Y' axis in relation to mounting to the track
 (D) Depth is measured as 'Z' axis in relation to mounting to the track
 (L) Length is measured as 'X' axis in relation to mounting to the track

Ventilator Mounts

Ventilator Mount | Impact 731

Used to mount an Impact 731 ventilator to a SafeMount with connector.



	IMPERIAL	METRIC
Part Number	0480038	
Dimensions	W 7.8 in D 2.5 in L 6.6 in	W 199 mm D 64 mm L 167 mm
Weight	2 lb	0.9 kg
Crash Tested	10g, 22g, 26g	
• Also compatible with Zoll Z Ventilator		

KEY

(W) Width is measured as 'Y' axis in relation to mounting to the track
 (D) Depth is measured as 'Z' axis in relation to mounting to the track
 (L) Length is measured as 'X' axis in relation to mounting to the track

Ventilator Mounts

Ventilator Mounts | HT70 Vent

The Newport HT70 Ventilator can be attached to either a swivel mount or a wall mount and provides a safe solution when transporting the ventilator.

Ventilator Swivel Mount – Newport HT70
Ventilator Wall Mount – Newport HT70

Swivel Mount | HT70 Vent



	IMPERIAL	METRIC
Part Number	0480052	
Dimensions	W 13.5 in D 2.6 in L 8.3 in	W 344 mm D 65 mm L 211 mm
Weight	5.1 lb	2.3 kg
Crash Tested	10g, 22g, 26g	

Wall Mount | HT70 Vent



	IMPERIAL	METRIC
Part Number	0480058	
Dimensions	W 6.1 in D 1.8 in L 6.6 in	W 155 mm D 45 mm L 167 mm
Weight	3.3 lb	1.5 kg
Crash Tested	10g, 22g, 26g	

KEY

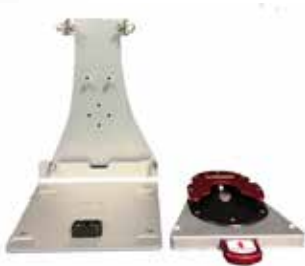
(W) Width is measured as 'Y' axis in relation to mounting to the track
 (D) Depth is measured as 'Z' axis in relation to mounting to the track
 (L) Length is measured as 'X' axis in relation to mounting to the track

Ventilator Mounts

Ventilator Mounts |

D360 Hamilton Mount Kit

The D360 Hamilton Mount Kit is designed to secure the ventilator and the ability to swivel it 360 degrees.



	IMPERIAL	METRIC
Part Number	0480186	
Dimensions	W 8.2 in D 12.8 in L 7.7 in	W 209.5 mm D 327 mm L 197 mm
Weight	3.5 lb	1.5 kg
Crash Tested	10g, 22g	

- Must be used in conjunction with Ferno D360 equipment specific adaptor
- Refer to users manual
- Supplied with all the fittings required
- Defibrillator sold separately

Ventilator Mounts |

D360 Hamilton Adaptor

The D360 Hamilton Adaptor is designed to secure the ventilator as well as giving the ability to swivel it 360 degrees. This part operates with the 0480184 or the 0480151 D360 mounts.



	IMPERIAL	METRIC
Part Number	0480187	
Dimensions	W 8.2 in D 10.5 in L 7.7 in	W 209.5 mm D 266.7 mm L 197 mm
Weight	1.4 lb	.68 kg
Crash Tested	10g, 22g	

- Must be used in conjunction with Ferno D360 equipment specific mount
- Refer to users manual
- Supplied with all the fittings required
- Defibrillator sold separately

KEY

(W) Width is measured as 'Y' axis in relation to mounting to the track
 (D) Depth is measured as 'Z' axis in relation to mounting to the track
 (L) Length is measured as 'X' axis in relation to mounting to the track

Ventilator Mounts

Mounting Plate | Pneupac

Specifically designed to mount the Pneupac Ventilator.



	IMPERIAL	METRIC
Part Number	0480074	
Dimensions	W 7.8 in D 2.4 in L 6.6 in	W 199 mm D 60 mm L 167 mm
Weight	2.4 lb	1.09 kg
Crash Tested	10g, 22g, 26g	

Ventilator Mount | MeduMat *Discontinued - replaced with 0480199*

Designed specifically for the MeduMat ventilator.



	IMPERIAL	METRIC
Part Number	0480079	
Dimensions	W 5.9 in D 2.2 in L 6.6 in	W 151 mm D 57 mm L 167 mm
Weight	2.7 lb	1.2 kg
Crash Tested	10g, 22g, 26g	

KEY

(W) Width is measured as 'Y' axis in relation to mounting to the track
 (D) Depth is measured as 'Z' axis in relation to mounting to the track
 (L) Length is measured as 'X' axis in relation to mounting to the track

Ventilator Mounts

Ventilator Mount | Weinmann

Lifebase 3NG

Fits the Weinmann wall mounting Base Station 3 NG only.



	IMPERIAL	METRIC
Part Number	0480159	
Dimensions	W 11 in D 15.9 in L 2.2 in	W 280 mm D 404 mm L 56 mm
Weight	4.8 lb	2.2 kg
Crash Tested	10g, 20g, 26g	
• Weinmann Base Station 3 NG fitting instructions must be followed		

KEY

(W) Width is measured as 'Y' axis in relation to mounting to the track

(D) Depth is measured as 'Z' axis in relation to mounting to the track

(L) Length is measured as 'X' axis in relation to mounting to the track

Ventilator Mounts

Ventilator Mounts |

Draeger

The Draeger ventilator can be attached to either a swivel mount or wall mount and designed specifically for the Draeger.

Ventilator Wall Mount – Draeger
Ventilator Swivel Mount – Draeger

Wall Ventilator Mount |

Draeger



	IMPERIAL	METRIC
Part Number	0480109	
Dimensions	W 11.2 in D 10.2 in L 9.5 in	W 285 mm D 259 mm L 31.4 mm
Weight	6.9 lb	3.14 kg
Crash Tested	10g, 22g, 26g	

Swivel Ventilator Mount |

Draeger



	IMPERIAL	METRIC
Part Number	0480110	
Dimensions	W 13.8 in D 9.9 in L 9.6 in	W 351 mm D 251 mm L 243 mm
Weight	8.7 lb	3.93 kg
Crash Tested	10g, 22g, 26g	

KEY

(W) Width is measured as 'Y' axis in relation to mounting to the track
 (D) Depth is measured as 'Z' axis in relation to mounting to the track
 (L) Length is measured as 'X' axis in relation to mounting to the track

Suction Mounts

Suction Unit Mount | Laerdal

Fits the Laerdal Suction Unit and requires the LSU wall bracket.



	IMPERIAL	METRIC
Part Number	0480042	
Dimensions	W 6.8 in D 2.2 in L 7.5 in	W 173 mm D 57 mm L 190 mm
Weight	6.6 lb	3 kg
Crash Tested	10g, 22g, 26g	

- Requires LSU Wall Bracket (with or without power cord).

Suction Unit Mount | SSCOR

Fits the SSCOR Suction Unit only.



	IMPERIAL	METRIC
Part Number	0480043	
Dimensions	W 5.9 in D 2.4 in L 7.9 in	W 151 mm D 60 mm L 200 mm
Weight	2.6 lb	1.2 kg
Crash Tested	10g, 22g, 26g	

KEY

(W) Width is measured as 'Y' axis in relation to mounting to the track
 (D) Depth is measured as 'Z' axis in relation to mounting to the track
 (L) Length is measured as 'X' axis in relation to mounting to the track

Suction Mounts

Suction Mount | Combo Adaptor Mount

Combo adaptor plate is able to mount the following equipment and comes complete with the bolts in each kit. Mounts:

- MeduMat Ventilator
- Weinmann Suction Unit
- Weinmann Base 1NG Suction Unit



	IMPERIAL	METRIC
Part Number	0480199	
Dimensions	W 6.4 in D 2.2 in L 6.6 in	W 163 mm D 57 mm L 167 mm
Weight	2.8 lb	1.25 kg
Crash Tested	10g, 22g, 26g	
Standards/ Certifications	AS/NZS 4535:1999, FMVSS / CAAS, CEN 1789, SAE J3042	
	<ul style="list-style-type: none"> • Comes complete with Safe Mount • Please follow fitment instructions • Device mountings sold separately. 	

Suction Unit Mount |

Weinmann Base 1NG

Discontinued - replaced with 0480199

Fits the Weinmann Base 1NG Suction Unit only.



	IMPERIAL	METRIC
Part Number	0480088	
Dimensions	W 6.4 in D 2.2 in L 6.6 in	W 163 mm D 57 mm L 167 mm
Weight	2.8 lb	1.25 kg
Crash Tested	10g, 22g, 26g	

KEY

(W) Width is measured as 'Y' axis in relation to mounting to the track
 (D) Depth is measured as 'Z' axis in relation to mounting to the track
 (L) Length is measured as 'X' axis in relation to mounting to the track

Suction Mounts

Suction Unit Mount |

SAM e.p.s (MGE)

The adaptor bracket for attaching the SAM eps wall bracket to the iN/TRAXX system via a SafeMount 0480146. The pack for the SAM's suction unit contains the adaptor plate, and necessary fixings.



	IMPERIAL	METRIC
Part Number	0480169	
Dimensions	W 9.7 in D .39 in L 5.1 in	W 247 mm D 10 mm L 130 mm
Weight	6 lb	2.7 kg
Load Capacity	.8 lb	.4 kg
Crash Tested	10g, 20g, 26g	
	<ul style="list-style-type: none"> • Adapter can only be used in conjunction with the 0480146 SafeMount • Refer to separate operators manual • SafeMount not included • SafeMount sold separately 	

Top view with Safemount

KEY

- (W) Width is measured as 'Y' axis in relation to mounting to the track
- (D) Depth is measured as 'Z' axis in relation to mounting to the track
- (L) Length is measured as 'X' axis in relation to mounting to the track

Suction Mounts

Suction Unit Mount | Weinmann
***Discontinued - replaced with**
0480199*

Fits the Weinmann Suction Unit only.



	IMPERIAL	METRIC
Part Number	0480078	
Dimensions	W 5.9 in D 2.2 in L 6.6 in	W 151 mm D 57 mm L 167 mm
Weight	2.6 lb	1.7 kg
Crash Tested	10g, 22g, 26g	

Suction Unit Mount |

Hersill V7 Plus B Emergency

Fits the Hersill V7 + B Emergency



	IMPERIAL	METRIC
Part Number	0480124	
Dimensions	W 5.9 in D 1.9 in L 6.6 in	W 151 mm D 48 mm L 167 mm
Weight	2.3 lb	1.05 kg
Crash Tested	10g, 22g, 26g	

- The 0480124 comes complete with Safemount.
- The follow fitment instructions
- Device mountings sold separately

KEY

(W) Width is measured as 'Y' axis in relation to mounting to the track
 (D) Depth is measured as 'Z' axis in relation to mounting to the track
 (L) Length is measured as 'X' axis in relation to mounting to the track

Pole & Rail Mounts

Pole Mounts

The Single, Double and Vertical Pole mounts provide an ergonomic solution for mounting devices that have a clamp attachment fitting. The Safe Working Load (SWL) of the Pole/Medrail is the SWL of the SafeMount.

- Pole Mount – Single**
- Pole Mount – Double**
- Pole Mount – Vertical**

Pole Mount | Single



	IMPERIAL	METRIC
Part Number	0480080	
Dimensions	W 8.1 in D 5.5 in L 6.6 in	W 206 mm D 140 mm L 167 mm
Weight	3.6 lb	1.62 kg
Crash Tested	10g, 22g, 26g	

Pole Mount | Double



	IMPERIAL	METRIC
Part Number	0480081	
Dimensions	W 12.6 in D 4.1 in L 6.6 in	W 320 mm D 103 mm L 167 mm
Weight	3.7 lb	1.7 kg
Crash Tested	10g, 22g, 26g	

KEY

(W) Width is measured as 'Y' axis in relation to mounting to the track
 (D) Depth is measured as 'Z' axis in relation to mounting to the track
 (L) Length is measured as 'X' axis in relation to mounting to the track

Pole & Rail Mounts

Pole Mount | Vertical



	IMPERIAL	METRIC
Part Number	0480112	
Dimensions	W 5.9 in D 10 in L 6.6 in	W 151 mm D 255 mm L 167 mm
Weight	2.8 lb	1.29 kg
Crash Tested	10g, 22g, 26g	

KEY

(W) Width is measured as 'Y' axis in relation to mounting to the track
(D) Depth is measured as 'Z' axis in relation to mounting to the track
(L) Length is measured as 'X' axis in relation to mounting to the track

Pole & Rail Mounts

Medrail

Similar to the Pole Mounts the Medrail supports equipment already equipped with a Medrail style mount in either the 25 or 30mm rail size. The SWL of the Pole/Medrail is the SWL of the SafeMount.

- MedRail Mount – 25mm**
- MedRail Mount – 30mm**

Medrail Mount | 25mm



	IMPERIAL	METRIC
Part Number	0480082	
Dimensions	W 5.9 in D 3.2 in L 12 in	W 151 mm D 81 mm L 305 mm
Weight	3.1 lb	1.4 kg
Crash Tested	10g, 22g, 26g	

Medrail Mount | 30mm



	IMPERIAL	METRIC
Part Number	0480091	
Dimensions	W 5.9 in D 3.2 in L 12 in	W 151 mm D 81 mm L 305 mm
Weight	3.2 lb	1.44 kg
Crash Tested	10g, 22g, 26g	

KEY

(W) Width is measured as 'Y' axis in relation to mounting to the track
 (D) Depth is measured as 'Z' axis in relation to mounting to the track
 (L) Length is measured as 'X' axis in relation to mounting to the track

Accessory Mounts

Litter Arm | Multipurpose

Comprising of a pair, the litter arms provide a compact solution to supporting a variety of products including Ferno and Junkin Litters.



	IMPERIAL	METRIC
Part Number	0480036	
Dimensions	W 7.2 in D 28.7 in L 6.6 in	W 182 mm D 730 mm L 167 mm
Weight	13.2 lb	6 kg
Load Capacity	352.7 lb (per pair)	160 kg (per pair)

Sold individually

Compatible Litters

FERNO Products:

- Najo Backboards
- Millenia Backboards
- Scoop EXL Stretcher
- Model #9
- Model #11
- Model #12
- Model #108-D Pole Stretcher
- Model #108 (All Models)
- SOF-L Special Operations Forces Litter

Junkin Safety Products:

- Medical Core Pole Stretchers
- Easy Fold Wheeled Stretcher
- Easy Fold with Elevating Headrest
- Easy Fold Wheeled Stretcher with Elevating Headrest & Handle

Litter Arm | Litter Arm Mount Talon 90C

Comprising of a pair the litter arms provide a compact solution to support the Talon 90C litter on an IN/TRAXX wall.



	IMPERIAL	METRIC
Part Number	0480037	
Dimensions	W 5 in D 28.7 in L 5 in	W 150 mm D 730 mm L 150 mm
Weight	13.2 lb	6 kg
Load Capacity	352.7 lb (per pair)	160 kg (per pair)

Sold individually

- Compatible with Talon11 90C, Talon 81C, Ferno 108T
- Sold individually
- Litters sold separately

KEY

(W) Width is measured as 'Y' axis in relation to mounting to the track
 (D) Depth is measured as 'Z' axis in relation to mounting to the track
 (L) Length is measured as 'X' axis in relation to mounting to the track

Accessory Mounts

Litter Arm | Light

5VDC LED strip light with controller housed in an Aluminium extrusion with an opaque defused cover. Adheres to the under side of the Talon 0480037 Litter arm, it provides a safe and secure light for the patient and attendant . the light includes a controller to change settings that can be easily set and remain in memory even after disconnection from power.



	IMPERIAL	METRIC
Part Number	0480179	
Dimensions	W .7 in D .4 in L 19.9 in	W 18 mm D 10 mm L 505 mm
Weight	.19 lb	.09 kg
	<ul style="list-style-type: none"> • Order separately to Litter Arm • 5V USB only • Colors: Red, Blue, White, Green 	

Spacer | Litter Arm Spacer

Used in the 0480036 Litter arm to space out litter for security when latched



	IMPERIAL	METRIC
Part Number	0480168	
Dimensions	W 1.4 in D 1.77 in L 1.96 in	W 36 mm D 45 mm L 50 mm
Weight	.11 lb	.05 kg
Crash Tested	10g, 22g, 26g	
	<ul style="list-style-type: none"> • Required for NATO and Talon Litters 	

KEY

(W) Width is measured as 'Y' axis in relation to mounting to the track
 (D) Depth is measured as 'Z' axis in relation to mounting to the track
 (L) Length is measured as 'X' axis in relation to mounting to the track

Accessory Mounts

Litter Arm | Loading Wedge

The Litter Arm Loading Wedge provides a seamless transition when loading a compatible litter into the litter arm.



	IMPERIAL	METRIC
Part Number	0480153	
Dimensions	W 1.8 in D 7.7 in L 2 in	W 45 mm D 195 mm L 52 mm
Weight	.8 lb	.37 kg

Ram Adapter | 2.5 SMC
SafeMount Connector

The Ram Adaptor is the interface between the SafeMount connector and the Ram arm.



	IMPERIAL	METRIC
Part Number	0480047	
Dimensions	W 2.5 in D .3 in L 2.5 in	W 64 mm D 7 mm L 64 mm
Weight	.1 lb	.06 kg
Crash Tested	10g, 22g, 26g	

KEY

(W) Width is measured as 'Y' axis in relation to mounting to the track
 (D) Depth is measured as 'Z' axis in relation to mounting to the track
 (L) Length is measured as 'X' axis in relation to mounting to the track

Accessory Mounts

Work Tray | With Arm

The work tray provides a stable area for medics to place quick grab items when attending to a patient. The arm provides maneuverability to the desired position.



	IMPERIAL	METRIC
Part Number	0480039	
Dimensions	W 7.8 in D 12.7 in L 12.7 in	W 199 mm D 323 mm L 323 mm
Weight	3 lb	1.37 kg
Crash Tested	10g, 22g, 26g	
	<ul style="list-style-type: none"> • Safe working load for the tray is 6 lb/3kg • Secure loose items during transport • Recommend use in the stationary position only 	

Work Tray | Hinged 2.0

The Work Tray – Hinged has the ability to be installed anywhere on the INJTRAXX Track. The work tray provides a stable area for medics to place quick grab items when attending to a patient.



	IMPERIAL	METRIC
Part Number	0480123	
Dimensions	W 4.6 in D 14.3 in L 12.7 in	W 117 mm D 362 mm L 323 mm
Weight	2.4 lb	1.11 kg
Crash Tested	10g, 22g, 26g	
	<ul style="list-style-type: none"> • Safe working load for the tray is 6 lb/3kg • Secure loose items during transport • Recommend use in the stationary position only 	

KEY

(W) Width is measured as 'Y' axis in relation to mounting to the track
 (D) Depth is measured as 'Z' axis in relation to mounting to the track
 (L) Length is measured as 'X' axis in relation to mounting to the track

Accessory Mounts

Tablet Mount | iPad Pro 9.7"

The Tablet Mount with adjustable arm provides manoeuvrability of the compatible iPad to the user's satisfaction.



	IMPERIAL	METRIC
Part Number	0480041	
Dimensions	W 7.7 in D 10.8 in L 10.8 in	W 196 mm D 275 mm L 275 mm
Weight	3.75 lb	1.7 kg
Load Capacity	4 lb	1.9 kg
Crash Tested	10g, 22g, 26g	
• Compatible with iPad Pro® 9.7		

KEY

(W) Width is measured as 'Y' axis in relation to mounting to the track

(D) Depth is measured as 'Z' axis in relation to mounting to the track

(L) Length is measured as 'X' axis in relation to mounting to the track

Accessory Mounts

SafeMount |

Tablet General B101UC

The General Tablet Mount allows various Tablets or Devices to be mounted to iN/TRAXX with position adjustment.



	IMPERIAL	METRIC
Part Number	0480190	
Dimensions	W 5.9 in D 9.3 in L 6.6 in	W 151 mm D 235 mm L 167 mm
Weight	2.3 lb	1.06 kg
Load Capacity	4 lb	1.9 kg
Crash Tested	10g, 22g, 26g	

Swivel SafeMount |

360deg "long handle"

Perfect for mounting equipment to Ferno PacRacs &/or iN/TRAXX bench track, rotational through 360deg and multipul lock locations.



	IMPERIAL	METRIC
Part Number	0480164	
Dimensions	W 2.5 in D 11.4 in L 6.5 in	W 66 mm D 291 mm L 167 mm
Weight	18 lb	8.1 kg
Load Capacity	55.1 lb	25 kg
Crash Tested	10g, 22g, 26g	

KEY

(W) Width is measured as 'Y' axis in relation to mounting to the track

(D) Depth is measured as 'Z' axis in relation to mounting to the track

(L) Length is measured as 'X' axis in relation to mounting to the track

Accessory Mounts

Swivel SafeMount |

360deg "short handle"

Perfect for mounting equipment to Ferno PacRacs &/or iN/TRAXX bench track, rotational through 360deg and multipul lock locations.



	IMPERIAL	METRIC
Part Number	0480165	
Dimensions	W 2.5 in D 9.8 in L 6.5 in	W 66 mm D 250 mm L 167 mm
Weight	17.9 lb	8.1 kg
Load Capacity	55.1 lb	25 kg
Crash Tested	10g, 22g, 26g	

Swivel Mount |

Rear Holder

Used on the 04800164 and 0480165 swivel SafeMounts the rear vertical holder assist to hold aftermarket mounting brackets/ systems.



	IMPERIAL	METRIC
Part Number	0480170	
Dimensions	W 3.3 in D .9 in L 1.3 in	W 85 mm D 25 mm L 35 mm
Weight	.22 lb	.1 kg
Crash Tested	10g, 20g, 26g	

KEY

(W) Width is measured as 'Y' axis in relation to mounting to the track
 (D) Depth is measured as 'Z' axis in relation to mounting to the track
 (L) Length is measured as 'X' axis in relation to mounting to the track

Accessory Mounts

Trash Bin Mount

Trash Bin Mount has the ability to be installed anywhere on the IN-TRAXX Track. Provides a receptacle for the general waste and trash during patient treatments.



	IMPERIAL	METRIC
Part Number	0480044	
Dimensions	W 10.3 in D 9.2 in L 10.6 in	W 262 mm D 234 mm L 268 mm
Weight	4.4 lb	2 kg
Load Capacity	2.2 lb	1 kg
	<ul style="list-style-type: none"> • Complete with Trash Bin (0480075) • 90-Day Warranty on Trash Bin 	

ACC - Mount | Trash Hamper - Ophart

Trash Bin Mount is a great alternative, as it is small and secure and can be mounted in both horizontal and vertical track.



	IMPERIAL	METRIC
Part Number	0480106	
Dimensions	W 9.4 in D 11.81 in L 6.1 in	W 240 mm D 300 mm L 155 mm
Weight	2.2 lb	1 kg
Load Capacity	6.6 lb	3 kg
Crash Tested	10g, 20g, 26g	
	<ul style="list-style-type: none"> • Plate is supplied as a kit including the bolts. • Refer to separate operators manual • Note: Ophart Bin is not supplied, purchase separately from your local Ophart supplier or alternatively, contact the FERNO team for assistance 	

KEY

(W) Width is measured as 'Y' axis in relation to mounting to the track
 (D) Depth is measured as 'Z' axis in relation to mounting to the track
 (L) Length is measured as 'X' axis in relation to mounting to the track

Accessory Mounts

Sharps Bin Mount

The Sharps Bin mount has the ability to be installed anywhere on the iN/TRAXX Track. The Sharps Bin provides a safe area to dispose of sharps with an anti-return feature to ensure no sharps can return from the bin.



	IMPERIAL	METRIC
Part Number	0480045	
Dimensions	W 13.8 in D 6.8 in L 13 in	W 350 mm D 173 mm L 330 mm
Weight	4.9 lb	2.2 kg
Load Capacity	2.2 lb	1 kg
Crash Tested	10g, 22g, 26g	

- Complete with Sharps Bin (0480076)
- 90-Day Warranty on Sharps Bin

Sharps Bin Mount | Sharpsafe

The Sharpsafe mount is for attaching the “Sharpsafe” brand of sharps bins to the iN/TRAXX wall system. This mount can retain the 2ltr, 3ltr, 4ltr, 7ltr and 9ltr Sharpsafe bins.



	IMPERIAL	METRIC
Part Number	0480141	
Dimensions	W 2.5 in D 7 in L 11.6 in	W 66 mm D 178 mm L 295 mm
Weight	1.6 lb	.75 kg
Crash Tested	10g, 22g, 26g	

- The 0480141 is only compliance with EN, SAE and AUS/NZ standard retaining the 2ltr, 3ltr, 4ltr Sharpsafe bins
- The sharps bins must be purchased separately from your Sharpsafe distributor
- The 0480141 is sold complete with the retention strap and plastic Sharpsafe mount

KEY

(W) Width is measured as 'Y' axis in relation to mounting to the track
 (D) Depth is measured as 'Z' axis in relation to mounting to the track
 (L) Length is measured as 'X' axis in relation to mounting to the track

Accessory Mounts

Chair Mount |

SecureLoc+, VERT, iN/TRAXX

The SecureLoc+ mount fits into track in the vertical elevation only. The chair is located by the axel then snapped into position, spring-loaded retention arm will hold the chair in position too allow the retaining belt to be applied.



	IMPERIAL	METRIC
Part Number	0480103	
Dimensions	W 40.5 in D 7.9 in L 21.4 in	W 1029 mm D 203 mm L 545 mm
Weight	26.3 lb	11.5 kg
Crash Tested	10g, 22g, 26g	
• Compatible with Ferno products Ferno EZ-Glide® & EZ-Glide® w/ POWERTraxx®		

ACC Mount |

SecureLoc+ - Stryker Chair Adapter

The iN/TRAXX SecureLoc+ - Stryker chair adaptor can be added to the iN/TRAXX 0480103 SecureLoc+ chair mount to allow for safe and secure fitment of the Stryker non-powered chair.



	IMPERIAL	METRIC
Part Number	0480196	
Dimensions	W 6.2 in D 10 in L 7.4 in	W 160 mm D 255 mm L 190 mm
Weight	2.7 lb	1.2 kg
Crash Tested	10g, 22g, 26g	
<ul style="list-style-type: none"> • Mount is supplied as a kit including bolts • Refer to separate operators manual for details • 0480103 SecureLoc+ is sold separately • For details on chairs please contact Ferno EMS 		

KEY

(W) Width is measured as 'Y' axis in relation to mounting to the track
 (D) Depth is measured as 'Z' axis in relation to mounting to the track
 (L) Length is measured as 'X' axis in relation to mounting to the track

Accessory Mounts

ACC - Mount |

Glovebox Single

The Glovebox Single holder accepts and secures most sizes of standard glove boxes. Designed to be easily cleaned, load and mount using our rotating lock knobs to secure to the iNTRAXX track.



	IMPERIAL	METRIC
Part Number	0480099	
Dimensions	W 10.1 in D 4.4 in L 9.7 in	W 259 mm D 114 mm L 247 mm
Weight	2 lb	.93 kg
Load Capacity	2.2 lb	1 kg
Crash Tested	10g, 22g, 26g	
	<ul style="list-style-type: none"> • Glovebox is designed for horizontal track mounting only • Please refer to separate operators manual 	

ACC - Mount |

Glovebox Triple

The Glovebox Triple holder accepts and secures most sizes of standard glove boxes. Designed to be easily cleaned, load and mount using our rotating lock knobs to secure to the iNTRAXX track.



	IMPERIAL	METRIC
Part Number	0480100	
Dimensions	W 15.5 in D 4.4 in L 14.4 in	W 394 mm D 114 mm L 367 mm
Weight	3.4 lb	1.5 kg
Load Capacity	6.6 lb	3 kg
Crash Tested	10g, 22g, 26g	
	<ul style="list-style-type: none"> • Glovebox is designed for horizontal track mounting only • Please refer to separate operators manual 	

KEY

(W) Width is measured as 'Y' axis in relation to mounting to the track
 (D) Depth is measured as 'Z' axis in relation to mounting to the track
 (L) Length is measured as 'X' axis in relation to mounting to the track

Accessory Mounts

ACC - Mount |

Glovebox Quad

The Glovebox Quad holder accepts and secures most sizes of standard glove boxes. Designed to be easily cleaned, load and mount using our rotating lock knobs to secure to the iN/TRAXX track.



	IMPERIAL	METRIC
Part Number	0480101	
Dimensions	W 10.7 in D 4.5 in L 24.5 in	W 272 mm D 116 mm L 623 mm
Weight	26.3 lb	11.5 kg
Load Capacity	8.8 lb	4 kg
Crash Tested	10g, 22g, 26g	
	<ul style="list-style-type: none"> • Glovebox is designed for horizontal track mounting only • 0480101 must have 4 gloveboxes installed at all times • Please refer to separate operators manual 	

KEY

(W) Width is measured as 'Y' axis in relation to mounting to the track
 (D) Depth is measured as 'Z' axis in relation to mounting to the track
 (L) Length is measured as 'X' axis in relation to mounting to the track

Accessory Mounts

Lock Knob | Multipurpose

Lock Knobs are used on various pieces throughout the Ferno range and are used to secure products to IN/TRAXX.



Lock Knob | Multipurpose Round Foot

Lock Knobs are used on various pieces throughout the Ferno range and are used to secure products to IN/TRAXX.



T Slot | Foot

The T Slot Foot with two M6 threaded holes, 16mm apart, provides an alternative mounting solution for various products to IN/TRAXX.



KEY

(W) Width is measured as 'Y' axis in relation to mounting to the track
 (D) Depth is measured as 'Z' axis in relation to mounting to the track
 (L) Length is measured as 'X' axis in relation to mounting to the track

	IMPERIAL	METRIC
Part Number	0480071	
Dimensions	W 1.5 in D 21.1 in L 1.5 in	W 37.6 mm D 53 mm L 37.6 mm
Weight	.5 lb	.23 kg
Crash Tested	10g, 22g, 26g	
• Sold individually		

	IMPERIAL	METRIC
Part Number	0480132	
Dimensions	W 1.5 in D 21.1 in L 1.5 in	W 37.6 mm D 53 mm L 37.6 mm
Weight	.5 lb	.23 kg
Crash Tested	10g, 22g, 26g	
• Sold individually		

	IMPERIAL	METRIC
Part Number	0480089	
Dimensions	W .7 in D .3 in L 1.2 in	W 19 mm D 7 mm L 31 mm
Weight	.02 lb	.001 kg
Crash Tested	10g, 22g, 26g	

Accessory Mounts

Toughbook Mounts

The Toughbook Mounts, compatible with the Panasonic CF-19, provide an ergonomic, secure and manoeuvrable solution for the Toughbook, attaching to IN|TRAXX via a SafeMount.

- Toughbook Mount – SAE**
- Toughbook Mount – CEN**

Toughbook Mount | SAE



	IMPERIAL	METRIC
Part Number	0480040 SAE	
Dimensions	W 10 in D 12.2 in L 12.2 in	W 255 mm D 311 mm L 311 mm
Weight	9.15lb	4.15 kg
Load Capacity	15 lb	6.75 kg
Crash Tested	10g, 22g, 26g	
• Compatible with Panasonic model CF-19		

Toughbook Mount | CEN



	IMPERIAL	METRIC
Part Number	0480070 SAE	
Dimensions	W 10 in D 12.2 in L 12.2 in	W 255 mm D 311 mm L 311 mm
Weight	5.78 lb	2.62 kg
Load Capacity	5.78 lb	2.62 kg
Crash Tested	10g,	
• Compatible with Panasonic model CF-19		

KEY

(W) Width is measured as 'Y' axis in relation to mounting to the track
 (D) Depth is measured as 'Z' axis in relation to mounting to the track
 (L) Length is measured as 'X' axis in relation to mounting to the track

SafeSeat | Single Lapsash

Mounts into intraxx and allows the ability to move the seat around the vehicle as clinical procedures demand



	IMPERIAL	METRIC
Part Number	0480115	
Dimensions	W 38.1 in D 22.2 in L 22 in	W 970 mm D 565 mm L 560 mm
Weight	52.9 lb	24 kg
<ul style="list-style-type: none"> • Refer to Installation Manual for installation instructions. • Dimensions relate to seat in unfolded position with headrest fully extended • Refer to FMVSS and UN Regulation for test specifications 		

SafeSeat | Dual Lapsash

Mounts into intraxx and allows the ability to move the seat around the vehicle as clinical procedures demand



	IMPERIAL	METRIC
Part Number	0480166	
Dimensions	W 38.1 in D 22.2 in L 22 in	W 970 mm D 565 mm L 560 mm
Weight	55.1 lb	25 kg
<ul style="list-style-type: none"> • Refer to Installation Manual for installation instructions. • Dimensions relate to seat in unfolded position with headrest fully extended • Refer to FMVSS and UN Regulation for test specifications 		

KEY

(W) Width is measured as 'Y' axis in relation to mounting to the track
 (D) Depth is measured as 'Z' axis in relation to mounting to the track
 (L) Length is measured as 'X' axis in relation to mounting to the track

Spare Parts

SafeMount | Connector

Used in the SafeMount with Connector, it is the interface between the equipment and the SafeMount.



	IMPERIAL	METRIC
Part Number	0480012	
Dimensions	W 1.8 in D .6 in	W 45.7 mm D 45.7 mm
Weight	.1 lb	.045 kg
Load Capacity	22 lb	10 kg
Crash Tested	10g, 22g, 26g	

Spacer Plate | 0.5 in

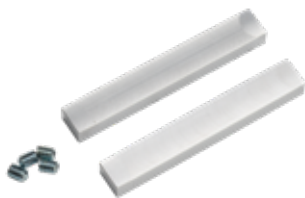
The Spacer Plate can be used on the 12 and 25kg Threaded SafeMounts and provides a surface 0.5" further away from the IN/TRAXX.



	IMPERIAL	METRIC
Part Number	0480057	
Dimensions	W 3.3 in D .05 in L 3.3 in	W 85 mm D 12.7 mm L 85 mm
Weight	.3 lb	.12 kg

Splicing Key

The Splicing Keys are used to join 2 end sections of IN/TRAXX complete with grub screws.



	IMPERIAL	METRIC
Part Number	0480054	
Dimensions	W .3 in D .2 in L 2.4 in	W 8 mm D 6 mm L 60 mm
Weight	.019 lb	8.6 g

KEY

(W) Width is measured as 'Y' axis in relation to mounting to the track
 (D) Depth is measured as 'Z' axis in relation to mounting to the track
 (L) Length is measured as 'X' axis in relation to mounting to the track

V Blocks

Both the V Blocks are used only on the SafePak mount and provide the area for the SafePaks, Small and Regular, to attach to.

- V Block – Tall**
- V Block – Short**

V Block | Tall



	IMPERIAL	METRIC
Part Number	0480065	
Dimensions	W 4.4 in D .6 in L 2.8 in	W 110 mm D 15 mm L 72 mm

V Block | Short



	IMPERIAL	METRIC
Part Number	0480066	
Dimensions	W 3.4 in D .6 in L 2.8 in	W 87 mm D 15 mm L 72 mm

KEY

- (W) Width is measured as 'Y' axis in relation to mounting to the track
- (D) Depth is measured as 'Z' axis in relation to mounting to the track
- (L) Length is measured as 'X' axis in relation to mounting to the track

Spare Parts

Adapter Plate | LifePak 15

The plate is a serviceable item fitted to the bottom of the LifePak 15 defib to locate the defib in the iN/TRAXX mount and protect the bottom of your defibrillator.



	IMPERIAL	METRIC
Part Number	0480167	
Dimensions	W 0.6 in D 6.85 in L 3.7 in	W 16 mm D 174 mm L 94 mm
Weight	.4 lb	.2 kg

Container | Trash

This spare trash container is a serviceable item to replace as needed for part #0480044.



	IMPERIAL	METRIC
Part Number	0480075	
Dimensions	W 10 in D 9.8 in L 10.4 in	W 225 mm D 250 mm L 265 mm
• 0480044 comes with a container		

KEY

(W) Width is measured as 'Y' axis in relation to mounting to the track
 (D) Depth is measured as 'Z' axis in relation to mounting to the track
 (L) Length is measured as 'X' axis in relation to mounting to the track

Spare Parts

Container | Sharps

This spare sharps container is a serviceable item to replace as needed for part #0480045.



	IMPERIAL	METRIC
Part Number	0480076	
Dimensions	W 12.2 in D 11.4 in L 4.3 in	W 310 mm D 290 mm L 110 mm
	• 0480045 comes with a container	

Secure Kit | LP 15

The LP 15 defibrillator mount service kit replaces the items within your defibrillator mount bracket to keep it in the best possible operational condition.

	IMPERIAL	METRIC
Part Number	0480214	
	<ul style="list-style-type: none"> • 0480014 kit supplied complete. Parts not sold separately • Please follow instructions for the replacement of these spare parts 	

Secure Kit | Zoll

The Zoll defibrillator mount service kit replaces the items within your defibrillator mount bracket to keep it in the best possible operational condition.

	IMPERIAL	METRIC
Part Number	0480213	
	<ul style="list-style-type: none"> • 0480213 kit complete. Parts not sold separately • Please follow instructions for the replacement of these spare parts 	

KEY

- (W) Width is measured as 'Y' axis in relation to mounting to the track
- (D) Depth is measured as 'Z' axis in relation to mounting to the track
- (L) Length is measured as 'X' axis in relation to mounting to the track

Product Spec Index

ITEM NUMBER	PRODUCT	WIDTH	DEPTH	LENGTH	WEIGHT	MATERIAL	FINISH	CERTIFICATION STANDARD	LOAD CAPACITY/ SWL	SOLD IN USA
0480001	Track System 1016mm	7.4 in 189 mm	.5 in 12.7 mm	40 in 1016 mm	7.5 lb 3.4 kg	Aluminum	Clear Natural Anodized	10G 22G 26G	220.4 lb 100 kg	Yes
0480002 0480003 0480004	Black End Caps Regular Grey End Caps Regular White End Caps Regular	7.6 in 90 mm	1.9 in 48 mm	.7 in 17 mm	.605 lb 90 g	Zytel	Black, Grey, or White	10G 22G 26G	—	Yes
0480005 0480006 0480007	Black T-Splice Caps Grey T-Splice Caps White T-Splice Caps	7.4 in 193 mm	.9 in 24 mm	.6 in 16 mm	.14 lb 64 g	Zytel	Black, Grey, or White	10G 22G 26G	—	Yes
0480008	Track Clip	2.7 in 69 mm	1.6 in 40.5 mm	1.6 in 41.5 mm	.2 lb .08 kg	Aluminum 7075-T6, Stainless Steel, Plastic	Clear Natural Anodized, Powder Coated Red & White	10G 22G 26G	5 lb 2.27 kg	Yes
0480010	SafeMount Threaded (25kg)	5.9 in 151 mm	1.4 in 34.5 mm	6.6 in 167 mm	1.86 lb .845 kg	Aluminum 7075-T6, Stainless Steel, Plastic	Clear Natural Anodized, Powder Coated White	10G 22G 26G	25 kg	Yes
0480011	SafeMount With Connector	7.4 in 187 mm	1.9 in 48.5 mm	6.6 in 167 mm	1.65 lb .75 kg	Aluminum 7075-T6, Stainless Steel, Plastic	Clear Natural Anodized, Powder Coated White	10G 22G 26G	22 lb 10 kg	Yes
0480012	SafeMount Connector	1.8 in 45.7 mm	.6 in 14.9 mm	—	.1 lb .045 kg	Aluminum 7075-T6	Clear Natural Anodized	10G 22G 26G	22 lb 10 kg	Yes
0480013	Defibrillator Wall Mount LifePak 15	14 in 356 mm	12.6 in 321 mm	8.3 in 210 mm	14.8 lb 6.7 kg	Aluminum 7075-T6, Stainless Steel, Plastic	Matte, Powder Coated White & Red	10G 22G 26G	—	Yes
0480014	Defibrillator Swivel Mount LifePak 15	16.3 in 415 mm	12 in 304 mm	8.3 in 210 mm	16.3 lb 7.4 kg	Aluminum 7075-T6, Stainless Steel, Plastic	Matte, Powder Coated White & Red	10G 22G 26G	—	Yes
0480015	Defibrillator Wall+Swivel Mount LifePak 15	16.3 in 415 mm	13.5 in 344 mm	8.3 in 210 mm	18.3 lb 8.3 kg	Aluminum 7075-T6, Stainless Steel, Plastic	Matte, Powder Coated White & Red	10G 22G 26G	—	Yes
0480019	Defibrillator Wall Mount Zoll X Series	11.1 in 282 mm	11.2 in 285 mm	8.3 in 210 mm	12.3 lb 5.6 kg	Plastic, Aluminum	Matte, Powder Coated White & Red	10G 22G 26G	—	Yes
0480020	Defibrillator Swivel Mount Zoll X Series	13.5 in 342 mm	10.4 in 265 mm	8.3 in 210 mm	17.4 lb 7.9 kg	Plastic, Aluminum	Matte, Powder Coated White & Red	10G 22G 26G	—	Yes
0480021	Defibrillator Wall+Swivel Mount Zoll X Series	13.5 in 342 mm	12 in 305 mm	8.3 in 210 mm	19.4 lb 8.8 kg	Plastic, Aluminum	Matte, Powder Coated White & Red	10G 22G 26G	—	Yes
0480022	SafePak Mount	43.9 in 1114 mm	2 in 50 mm	19 in 485 mm	12.79 lb 5.8 kg	Plastic, Aluminum	Matte, Powder Coated White & Red	10G 22G 26G	25 lb 11.38 kg	Yes
0480023	Red SafePak Small	12.8 in 325 mm	9.4 in 240 mm	18.1 in 460 mm	11.1 lb 5.03 kg	Plastic	Red	10G 22G 26G	17 lb 7.71 kg	Yes
0480024	Red SafePak Regular	18.9 in 481 mm	9.4 in 240 mm	18.1 in 460 mm	16.9 lb 7.66 kg	Plastic	Red	10G 22G 26G	—	Yes
0480026	SafePak Pouch Small	4.7 in 120 mm	2.8 in 70 mm	3.9 in 100 mm	.3 lb .136 kg	Plastic	Glossy Grey Shell, Matte Grey Plastics	10G 22G 26G	.5 lb .226 kg	Yes
0480027	SafePak Pouch Medium	4.7 in 120 mm	2.8 in 70 mm	7.9 in 200 mm	0.6 lb 0.25 kg	Plastic	Glossy Grey Shell, Matte Grey Plastics	10G 22G 26G	2.5 lb 1.13 kg	Yes
0480028	SafePak Pouch Large Vertical	10.2 in 260 mm	2.8 in 70 mm	7.9 in 200 mm	0.9 lb 0.4 kg	Plastic	Glossy Grey Shell, Matte Grey Plastics	10G 22G 26G	4.5 lb 2.04 kg	Yes
0480029	SafePak Pouch Large Horizontal	4.7 in 120 mm	2.8 in 70 mm	15.7 in 400 mm	0.9 lb 0.4 kg	Plastic	Glossy Grey Shell, Matte Grey Plastics	10G 22G 26G	4.5 lb 2.04 kg	Yes
0480030	Pouch Mount Carrier Single	4.6 in 118 mm	0.6 in 15 mm	7.5 in 190 mm	0.23 lb 0.106 kg	Plastic	Grey, Red	10G 22G 26G	5 lb 2.4 kg	Yes
0480031	Pouch Track Mount Single	4.9 in 125 mm	2.1 in 53.9 mm	11.4 in 290 mm	1.59 lb .725 kg	Aluminum, ABS Plastic	Powder Coated White, Grey Plastics	10G 22G 26G	5 lb 2.4 kg	Yes
0480032	Pouch Track Mount Double Vertical	10.6 in 268 mm	2.1 in 53.9 mm	11.4 in 290 mm	.557 lb 1.23 kg	Aluminum, ABS Plastic	Powder Coated White, Grey Plastics	10G 22G 26G	5 lb 2.4 kg	Yes
0480033	Pouch Track Mount Double Horizontal	4.9 in 125 mm	2.1 in 53.9 mm	21.5 in 545 mm	10.5 lb 7.78 kg	Aluminum, ABS Plastic	Powder Coated White, Grey Plastics	10G 22G 26G	4.5 lb 2.04 kg	Yes
0480034	Oxygen Mount Single	18.9 in 480 mm	8.3 in 210 mm	6.6 in 167 mm	4.9 lb 2.2 kg	Plastic, Aluminum	Powder Coated White	10G 22G 26G	25 kg	Yes
0480035	Oxygen Mount Triple	28.7 in 730 mm	9.1 in 230 mm	27 in 686 mm	50 lb 22.68 kg	Plastic, Aluminum	Powder Coated White	10G 22G 26G	—	Yes
0480036	Litter Arm Multipurpose	7.2 in 182 mm	28.7 in 730 mm	6.6 in 167 mm	13.2 lb 6 kg	Aluminum	Powder Coated White	—	352.7 lb 160 kg per pair	Yes

KEY

(W) Width is measured as 'Y' axis in relation to mounting to the track
 (D) Depth is measured as 'Z' axis in relation to mounting to the track
 (L) Length is measured as 'X' axis in relation to mounting to the track

WARRANTY

- iNTRAXX track "Limited Lifetime Warranty"
- All other products come with a 2-year warranty
- For details refer to FERNO warranty statement.

Product Spec Index

ITEM NUMBER	PRODUCT	WIDTH	DEPTH	LENGTH	WEIGHT	MATERIAL	FINISH	CERTIFICATION STANDARD	LOAD CAPACITY/ SWL	SOLD IN USA
0480037	Litter Arm Litter Arm Mount Talon 90C	5 in 150 mm	28.7 in 730 mm	5 in 150mm	13.2 lb 6 kg	Steel	Black Powder Coated	10G	—	Yes
0480038	Vent Mount Impact 731	7.8 in 199 mm	2.5 in 64 mm	6.6 in 167 mm	2 lb 0.9 kg	Plastic, Aluminum	Clear Natural Anodized, Powder Coated White	10G 22G 26G	—	Yes
0480039	Work Tray With Arm	7.8 in 199 mm	12.7 in 323 mm	12.7 in 323 mm	3 lb 1.37 kg	Aluminum, Plastic	White	10G 22G 26G	—	Yes
0480040	Toughbook Mount SAE	10 in 255 mm	12.2 in 311 mm	12.2 in 311 mm	9.15 lb 4.15 kg	Aluminum	Matte Anodized Black	10G 22G 26G	15 lb 6.75 kg	Yes
0480041	Tablet Mount	7.7 in 196 mm	10.8 in 275 mm	10.8 in 275 mm	3.75 lb 1.7 kg	Plastic	Matte Black	10G 22G 26G	4 lb 1.9 kg	Yes
0480042	LSU Mount Laerdal	6.8 in 173 mm	2.2 in 57 mm	7.5 in 190 mm	6.6 lb 3 kg	Aluminum	Matte Anodized	10G 22G 26G	—	Yes
0480043	Suction Mount SSCOR	5.9 in 151 mm	2.4 in 60 mm	7.9 in 200 mm	2.6 lb 1.2 kg	Aluminum	Matte Anodized	10G 22G 26G	—	Yes
0480044	Trash Bin Mount	10.3 in 262 mm	9.2 in 234 mm	10.6 in 268 mm	4.4 lb 2 kg	Plastic, Aluminum	Powder Coated Black	10G 22G 26G	2.2 lb 1 kg	Yes
0480045	Sharps Bin Mount	13.8 in 350 mm	6.8 in 173 mm	13 in 330 mm	4.9 lb 2.2 kg	Plastic, Aluminum	Powder Coated Black	10G 22G 26G	2.2 lb 1 kg	Yes
0480047	Ram Adapter 2.5 SMC	2.5 in 64 mm	0.3 in 7 mm	2.5 in 64 mm	0.1 lb 0.06 kg	Aluminum	Black	10G 22G 26G	—	Yes
0480049 0480050 0480051	Black End Caps Thin Grey End Caps Thin White End Caps Thin	7.4 in 193 mm	1.5 in 48mm	.7 in 17 mm	.605 lb 275 g	Zytel	Black, Grey, or White	10G 22G 26G	—	Yes
0480052	Swivel Mount HT70 Vent	13.5 in 344 mm	2.6 in 65 mm	8.3 in 211 mm	5.1 lb 2.3 kg	Aluminum	Powder Coated White	10G 22G 26G	—	Yes
0480054	Splicing Key	—	—	2.4 in 60 mm	.019 lb 8.6 g	Aluminum 7075-T6	None	10G 22G 26G	—	Yes
0480056	Wall Mount Corplus 3	7.7 in 196 mm	3.9 in 98 mm	10.3 in 261 mm	3.5 lb 1.59 kg	Aluminum	Powder Coated White	10G 22G 26G	—	Yes
0480057	Spacer Plate 0.5 in	3.3 in 85 mm	0.5 in 12.7 mm	3.3 in 85 mm	0.3 lb 0.12 kg	Plastic	White	—	—	Yes
0480058	Wall Mount HT70 Vent	6.1 in 155 mm	1.8 in 45 mm	6.6 in 167 mm	3.3 lb 1.5 kg	Aluminum	Powder Coated White	10G 22G 26G	—	Yes
0480059 0480060	Blue SafePak Regular White SafePak Regular	18.9 in 481 mm	9.4 in 240 mm	18.1 in 460 mm	16.9 lb 7.66 kg	Plastic	Red, Blue, or White	10G 22G 26G	25 lb 11.34 kg	Yes
0480065	V Block Tall	4.4 in 110 mm	0.6 in 15 mm	2.8 in 72 mm	—	Plastic	White	—	—	Yes
0480066	V Block Short	3.4 in 87 mm	0.6 in 15 mm	2.8 in 72 mm	—	Plastic	White	—	—	Yes
0480070	Toughbook Mount CEN	10 in 255 mm	12.2 in 311 mm	12.2 in 311 mm	5.78 lb 2.62 kg	Aluminum	Matte Anodized Black	10G 22G	10 lb 4.5 kg	Yes
0480071	Lock Knob Multipurpose	1.5 in 37.6 mm	2.1 in 53 mm	1.5 in 37.6 mm	0.5 lb 0.23 kg	Stainless Steel & Plastic	White	10G 22G 26G	—	Yes
0480072	SafePak Pouch Divider	3.9 in 99 mm	2.55 in 64.8 mm	1.57 in 40 mm	—	Plastic	Grey	—	—	Yes
0480074	Mounting Plate Pnepac	7.8 in 199 mm	2.4 in 60 mm	6.6 in 167 mm	2.4 lb 1.08 kg	Aluminum	Powder Coated White	10G 22G 26G	—	Yes
0480075	Container Trash	10.3 in 255 mm	9.8 in 250 mm	10.4 in 265 mm	—	Plastic	Grey	—	—	Yes
0480076	Container Sharps	12.2 in 310 mm	11.4 in 290 mm	4.3 in 110 mm	—	Plastic	Red Clear	—	—	Yes
0480077	Blue SafePak Small	12.8 in 325 mm	9.4 in 240 mm	18.1 in 460 mm	11.1 lb 5.03 kg	Plastic	Blue	10G 22G 26G	17 lb 7.71 kg	Yes
0480078	Suction Mount Weinmann	5.9 in 151 mm	2.2 in 57 mm	6.6 in 167 mm	2.7 lb 1.2 mm	Aluminum	Clear Natural Anodized	10G 22G 26G	—	Yes
0480079	Vent Mount MeduMat	5.9 in 151 mm	2.2 in 57 mm	6.6 in 167 mm	2.7 lb 1.2 kg	Aluminum	Clear Natural Anodized	10G 22G 26G	—	Yes
0480080	Pole Mount Single	8.1 in 206 mm	5.5 in 140 mm	6.6 in 167 mm	3.6 lb 1.62 kg	Aluminum	Clear Natural Anodized	10G 22G 26G	—	Yes
0480081	Pole Mount Double	12.6 in 320 mm	4.1 in 103 mm	6.6 in 167 mm	3.7 lb 1.7 kg	Aluminum	Clear Natural Anodized	10G 22G 26G	—	Yes
0480082	Medrail Mount 25mm	5.9 in 151 mm	3.2 in 81 mm	12 in 305 mm	2.7 lb 1.23 kg	Aluminum	Clear Natural Anodized	10G 22G 26G	—	Yes

KEY

(W) Width is measured as 'Y' axis in relation to mounting to the track
 (D) Depth is measured as 'Z' axis in relation to mounting to the track
 (L) Length is measured as 'X' axis in relation to mounting to the track

WARRANTY

- iN/TRAXX track "Limited Lifetime Warranty"
- All other products come with a 2-year warranty
- For details refer to FERNO warranty statement.

Product Spec Index

ITEM NUMBER	PRODUCT	WIDTH	DEPTH	LENGTH	WEIGHT	MATERIAL	FINISH	CERTIFICATION STANDARD	LOAD CAPACITY/ SWL	SOLD IN USA
0480083	Pouch Track Mount Double	4.9 in 125 mm	2.1 in 53.9 mm	21.5 in 545 mm	2.2 lb 1.14 kg	Aluminum, ABS Plastic	Powder Coated White, Grey Plastics	10G 22G 26G	5 lb 2.4 kg	Yes
0480084	Wall Mount Physio LP1000 AED	7.7 in 196 mm	2.4 in 62 mm	10 in 253 mm	3.1 lb 1.4 kg	Aluminum	Powder Coated White	10G 22G 26G	—	Yes
0480085	SafeCab Small	13.8 in 350 mm	13 in 330 mm	21.5 in 545 mm	29.8 lb 13.5 kg	CPVC	White with Red Trim	10G 22G 26G	11 lb 5 kg	Yes
0480086	SafeCab Medium	13.8 in 350 mm	13 in 330 mm	31.5 in 800 mm	36.4 lb 16.5 kg	CPVC	White with Red Trim	10G 22G 26G	17.6 lb 8 kg	Yes
0480087	SafeCab Large	13.8 in 350 mm	13 in 330 mm	46.5 in 1180 mm	51.8 lb 23.5 kg	CPVC	White with Red Trim	10G 22G 26G	26.5 lb 12 kg	Yes
0480088	Mount Weimann Base 1NG	6.4 in 163 mm	2.2 in 57 mm	6.6 in 167 mm	2.8 in 1.25 kg	Aluminum	Powder Coated White	10G 22G 26G	—	Yes
0480089	T Slot Foot	0.7 in 19 mm	0.3 in 7 mm	1.2 in 31 mm	0.02 lb 0.01 kg	Aluminum	Clear Natural Anodized	10G 22G 26G	—	Yes
0480090	White SafePak Small	12.8 in 325 mm	9.4 in 240 mm	18.1 in 460 mm	11.1 lb 5.03 kg	Plastic	White	10G 22G 26G	17 lb 7.71 kg	Yes
0480091	Medrail Mount 30mm	5.9 in 151 mm	3.2 in 81 mm	12 in 305 mm	3.2 lb 1.44 kg	Aluminum	Clear Natural Anodized	10G 22G 26G	—	Yes
0480092	SafePak Pouch Medium Mesh	4.7 in 120 mm	Expandable to 4 in 101.6 mm	7.9 in 200 mm	1.5 lb .7 kg	Flexible Mesh	Mesh Fabric, Matte Grey Plastics	10G 22G 26G	2.5 lb 1.13 kg	Yes
0480093	Wall Mount Corplus Monitor	7.8 in 199 mm	3.9 in 98 mm	6.6 in 167 mm	2.9 lb 1.3 kg	Aluminum	Powder Coated White	10G	—	Yes
0480094	Swivel Mount Corplus 3	10.3 in 261 mm	9.8 in 250 mm	10.3 in 262 mm	4.9 lb 2.24 kg	Aluminum	Powder Coated White	10G 22G 26G	—	Yes
0480095	Wall + Swivel Mount Corplus 3	10.3 in 261 mm	10.5 in 266 mm	10.3 in 262 mm	7.6 lb 3.44 kg	Aluminum	Powder Coated White	10G 22G 26G	—	Yes
0480099	ACC - Mount - Glovebox Single	10.1 in 259 mm	4.4 in 114 mm	9.7 in 247 mm	2.2 lb 1 kg	Aluminum	Powder Coated White	10G 22G 26G	2.2 lb 1 kg	Yes
0480100	ACC - Mount - Glovebox Triple	15.5 in 394 mm	4.8 in 114 mm	14.4 in 367 mm	3.4 lb 1.5 kg	Aluminum	Powder Coated White	10G 22G 26G	6.6 lb 3 kg	Yes
0480101	ACC - Mount - Glovebox Quad	10.7 in 272 mm	4.5 in 116 mm	24.5 in 623 mm	4.6 lb 2.1 kg	Aluminum	Powder Coated White	10G 22G 26G	8.1 lb 4 kg	Yes
0480103	Chair Mount SECURELOC+, VERT, iNTRAXX	40.5 in 1029 mm	7.9 in 203 mm	21.4 in 545 mm	26.3 lb 11.5 kg	Aluminum	Powder Coated White & Black	—	—	Yes
0480106	ACC - Mount Trash Hamper - Orph	9.44 in 240 mm	11.8 in 300 mm	6.1 in 155 mm	2.2 lb 1 kg	Aluminum	White	10G 22G 26G	6.6 lb 3 kg	Yes
0480107	Ceiling Track Right	7.4 in 189 mm	.5 in 12.7 mm	40 in 1016 mm	7.5 lb 3.4 kg	Aluminum	Clear Natural Anodized	10G 22G 26G	220.4 lb 100 kg	Yes
0480108	Ceiling Track Center	7.4 in 189 mm	.5 in 12.7 mm	40 in 1016 mm	7.5 lb 3.4 kg	Aluminum	Clear Natural Anodized	10G 22G 26G	220.4 lb 100 kg	Yes
0480109	Wall Vent Mount Draeger	11.2 in 285 mm	10.2 in 259 mm	9.5 in 242 mm	6.9 lb 3.14 kg	Aluminum	Powder Coated White	10G 22G 26G	—	Yes
0480110	Swivel Vent Mount Draeger	13.8 in 351 mm	9.9 in 251 mm	9.6 in 243 mm	8.7 lb 3.93 kg	Aluminum	Powder Coated White	10G 22G 26G	—	Yes
0480112	Pole Mount Vertical	5.9 in 151 mm	10 in 255 mm	6.6 in 167 mm	2.8 lb 1.29 kg	Aluminum	Clear Natural Anodized	10G 22G 26G	—	Yes
0480115	SafeSeat Single Lapsash	38.1 in 970 mm	22.2 in 565 mm	22 in 560 mm	52.9 lb 24 kg	Aluminum	Black	10G 22G 26G	—	Yes
0480123	Work Tray Hinged 2.0	4.6 in 117 mm	14.3 in 362 mm	12.7 in 323 mm	2.4 lb 1.11 kg	Aluminum, Plastic	White	10G 22G 26G	—	Yes
0480124	HERSILL Mount V7 Plus B Emergency	5.9 in 151 mm	1.9 in 48 mm	6.6 in 167 mm	2.3 lb 1.05 kg	Aluminum	Powder Coated White	10G 22G 26G	—	Yes
0480126	Oxygen Mount Double	34.5 in 876 mm	8.9 in 226 mm	17.8 in 451 mm	34 lb 15.4 kg	Plastic, Aluminum	Powder Coated White	10G 22G 26G	—	Yes
0480127	Oxygen Mount CD 02 Mount Bracket Only	19.7 in 500 mm	5.6 in 142 mm	0.39 in 10 mm	2.2 lb 1 kg	Aluminum	Powder Coated White	10G 22G 26G	77.2 lb 25 kg	Yes
0480128	Oxygen Mount CD 02 Cylinder Bracket Only	19.7 in 500 mm	5.6 in 142 mm	0.39 in 10 mm	2.2 lb 1 kg	Aluminum, Rubber	Powder Coated White	10G 22G 26G	77.2 lb 25 kg	Yes
0480131	Ceiling Track Left	7.4 in 189 mm	.5 in 12.7 mm	40 in 1016 mm	7.5 lb 3.4 kg	Aluminum	Clear Natural Anodized	10G 22G 26G	220.4 lb 100 kg	Yes
0480132	Lock Knob Multipurpose Round Foot	1.5 in 37.6 mm	2.1 in 53 mm	1.5 in 37.6 mm	0.5 lb 0.23 kg	Stainless Steel & Plastic	White	10G 22G 26G	—	Yes
0480141	Sharps Bin Mount Sharpsafe	2.5 in 65 mm	7 in 178 mm	11.6 in 295 mm	1.6 lb .75 kg	Aluminum	Powder Coated White	10G 22G 26G	—	Yes
0480145	Oxygen Mount Double	34.5 in 876 mm	8.9 in 226 mm	17.8 in 451 mm	34 lb 15.4 kg	Plastic, Aluminum	Powder Coated White	10G 22G 26G	—	Yes
0480146	SafeMount Threaded (12kg)	5.9 in 151 mm	1.6 in 40 mm	6.6 in 167 mm	1.6 lb .74 kg	Aluminum 7075-T6, Stainless Steel, Plastic	Clear Natural Anodized, Powder Coated White	10G 22G 26G	26.5 lb 12 kg	Yes
0480149	Defibrillator Mount Zoll AED 3 in TRAXX	12.2 in 312 mm	9 in 229 mm	10.2 in 260 mm	5.7 lb 2.6 kg	Aluminum	Powder Coated White	10G 22G 26G	7.7 lb 3.5 kg	Yes
0480150	Defibrillator Mount Zoll AED 3 Direct Mount	12.2 in 312 mm	7.5 in 191 mm	10.2 in 260 mm	4.1 lb 1.9 kg	Aluminum	Powder Coated White	10G 22G 26G	7.7 lb 3.5 kg	Yes

KEY

(W) Width is measured as 'Y' axis in relation to mounting to the track
 (D) Depth is measured as 'Z' axis in relation to mounting to the track
 (L) Length is measured as 'X' axis in relation to mounting to the track

WARRANTY

- iNTRAXX track "Limited Lifetime Warranty"
- All other products come with a 2-year warranty
- For details refer to FERNO warranty statement.

Product Spec Index

ITEM NUMBER	PRODUCT	WIDTH	DEPTH	LENGTH	WEIGHT	MATERIAL	FINISH	CERTIFICATION STANDARD	LOAD CAPACITY/ SWL	SOLD IN USA
0480151	Wall Mount D360	5.9 in 151 mm	15.1 in 384 mm	6.6 in 167 mm	4 lb 1.8 kg	Aluminum	Powder Coated White	10G 22G 26G	—	
0480153	Litter Arm Loading Wedge	1.8 in 45 mm	7.7 in 195 mm	2 in 52 mm	.8 lb .37 kg	Plastic	Black	—	—	Yes
0480155	Pouch Mount Plate 3T2	17.8 in 453 mm	1.1 in 28.5 mm	16.4 in 416 mm	4.2 lb 1.9 kg	Aluminum, ABS Plastic	Powder Coated White	10G 22G 26G	15 lb 6.8 kg	Yes
0480156	D360 ProPac/Zoll Adaptor P/N FA868A151	1.6 in 41 mm	4.5 in 114 mm	7.1 in 180 mm	3.7 lb 1.7 kg	Aluminum	Powder Coated White	10G 20G 26G	—	Yes
0480157	Oxygen Mount Double	34.5 in 876 mm	8.9 in 226 mm	17.8 in 451 mm	34 lb 15.4 kg	Plastic, Aluminum	Powder Coated White	10G 22G 26G	—	Yes
0480158	Oxygen Mount Double	34.5 in 876 mm	8.9 in 226 mm	17.8 in 451 mm	34 lb 15.4 kg	Plastic, Aluminum	Powder Coated White	10G 22G 26G	—	Yes
0480159	Ventilator Mount Weimann Lifebase 3NG	11 in 280 mm	15.9 in 404 mm	2.2 in 56 mm	4.8 lb 2.2 kg	Aluminum	White	10G 20G 26G	—	Yes
0480160	Pouch Mount Plate 4T2	23.1 in 588 mm	1.1 in 28.5 mm	16.4 in 416 mm	4.42 lb 2.46 kg	Aluminum, ABS Plastic	Powder Coated White	10G 22G 26G	19.9 lb 9.04 kg	Yes
0480161	Pouch Mount Plate 2T2	11.7 in 298 mm	1.1 in 28.5 mm	16.4 in 416 mm	2.8 lb 1.25 kg	Aluminum, ABS Plastic	Powder Coated White	10G 22G 26G	10 lb 4.52 kg	Yes
0480162	Pouch Mount Plate 1T2	7.2 in 183 mm	1.1 in 28.5 mm	16.4 in 416 mm	1.6 lb .72 kg	Aluminum, ABS Plastic	Powder Coated White	10G 22G 26G	5.0 lb 2.26 kg	Yes
0480163	Oxygen Mount CD O2 single Cylinder Mount	19.7 in 500 mm	5.1 in 130 mm	6.7 in 167 mm	6.1 lb 2.7 kg	Aluminum, Rubber	Powder Coated White	10G 22G 26G	77.2 lb 25 kg	Yes
0480164	Swivel SafeMount 360deg "long handle"	2.5 in 66 mm	11.4 in 291 mm	6.5 in 167 mm	19 lb 8.1 kg	Aluminum	Powder Coated White & Black	10G 22G 26G	55.1 lb 25 kg	Yes
0480165	Swivel SafeMount 360deg "short handle"	2.5 in 66 mm	9.8 in 250 mm	6.5 in 167 mm	17.9 lb 8.1 kg	Aluminum	Powder Coated White & Black	10G 22G 26G	55.1 lb 25 kg	Yes
0480166	SafeSeat Dual Lapshash	38.1 in 970 mm	22.2 in 565 mm	22 in 500 mm	55.1 lb 2 kg	Aluminum	Black	—	—	Yes
0480167	Adapter Plate LifePak 15	.62 in 16 mm	6.85 in 174 mm	3.7 in 94 mm	.4 lb .2 kg	Plastic	Black	—	—	Yes
0480167	Spacer Litter Arm Spacer	1.41 in 36 mm	1.7 in 45 mm	1.9 in 50 mm	.11 lb .05 kg	Plastic	Black	10G 22G 26G	—	Yes
0480169	Suction Mount SAM e.p.s. (MGE)	9.7 in 247 mm	.3 in 10 kg	5.1 in 130 kg	6 lb 2.7 kg	Stainless Steel	Natural	10G 20G 26G	—	Yes
0480170	Swivel Mount Rear Holder	3.3 in 85 mm	.9 in 25 mm	1.3 in 35 mm	.22 lb .1 kg	Aluminum	Powder Coated White	10G 20G 26G	—	Yes
0480171	Track System 1016 Centre Drop-in	7.41 in 189 mm	0.5 in 12.7 mm	40 in 1016 mm	7.5 lb 3.4 kg	Aluminum	Anodised	10G 22G 26G	220.4 lb 100 kg	Yes
0480173	SafePouch Small Jumbo	4.7 in 120 mm	4.7 in 120 mm	3.9 in 100 mm	.3 lb .1 kg	Matte Grey Plastic	Gloss Grey Shell	10G 20G 26G	0.5 lb .2 kg	Yes
0480174	SafePouch Medium Jumb	4.7 in 120 mm	4.7 in 120 mm	7.9 in 200 mm	.6 lb .25 kg	Matte Grey Plastic	Gloss Grey Shell	10G 20G 26G	2.5 lb 1.3 kg	Yes
0480175	SafePouch Large Vertical Jumbo	10.2 in 260 mm	4.7 in 120 mm	7.9 in 200 mm	1 lb 4 kg	Matte Grey Plastic	Gloss Grey Shell	10G 20G 26G	4.5 lb 2 kg	Yes
0480176	SafePouch Large HOZ Jumbo	4.7 in 120 mm	4.7 in 120 mm	15.7 in 400 mm	1 lb 4 kg	Matte Grey Plastic	Gloss Grey Shell	10G 20G 26G	4.5 lb 2 kg	Yes
0480177	SafePouch Dual Large Vertical Jumbo	10.2 in 260 mm	4.7 in 120 mm	15.7 in 400 mm	1.8 lb .8 kg	Matte Grey Plastic	Gloss Grey Shell	10G 20G 26G	8.8 lb 4 kg	Yes
0480178	SafePouch 1.5 Large HOZ Jumbo	4.7 in 120 mm	4.7 in 120 mm	23.6 in 600 mm	1.4 lb .6 kh	Matte Grey Pastic	Gloss Grey Shell	10G 20G 26G	4.5 lb 2 kg	Yes
0480179	Litter Arm Light	.7 in 18 mm	.4 in 10 mm	19.9 in 505 mm	.19 lb .09 kg	Aluminum & Plastic	Brushed	—	—	Yes
0480180	Defibrillator Wall Mount Tempus LS Kit	6.4 in 165 mm	6.4 in 165 mm	7.6 in 195 mm	1.6 lb .7 kg	Stainless Steel	Brushed	10G 20G 26G	—	Yes
0480181	Defibrillator Wall Mount Tempus PRO Kit	5.9 in 151 mm	6.7 in 171 mm	12.2 in 310 mm	1.3 lb 6.1 kg	Stainless Steel	Brushed	10G 20G 26G	—	Yes
0480184	Defibrillator Counter Top D360 Swivel	7.6 in 195 mm	1.4 in 37 mm	7.2 in 185 mm	1.9 lb .8 mm	Aluminum	Anodised	10G 20G	—	Yes
0480185	Defibrillator Counter Top D360 Zoll Mount Kit	7.6 in 195 mm	2.3 lb 60 mm	7.2 lb 185 mm	2.8 lb 1.3 kg	Aluminum	Anodised	10G 20G	—	Yes
0480186	Ventilator Mounts D360 Hamilton Mount Kit	8.2 in 209.5 mm	12.8 in 327 mm	7.7 mm 197 mm	3.5 lb 1.5 kg	Aluminum	Anodised	10G 20G	—	Yes
0480187	Ventilator Mounts D360 Hamilton Adaptor	8.2 in 209.5 mm	105. in 266.7 mm	7.7 in 197 mm	1.4 lb .6 kg	Aluminum	Anodised	10G 20G	—	Yes
0480188	Defibrillator Mounts D360 LP15 Adaptor	16.6 in 424 mm	11.5 in 292 mm	14.6 in 373 mm	5 lb 2.2 kg	Aluminum	Powder Coated White	10G 20G	50 lb 22 kg	Yes

KEY

(W) Width is measured as 'Y' axis in relation to mounting to the track
 (D) Depth is measured as 'Z' axis in relation to mounting to the track
 (L) Length is measured as 'X' axis in relation to mounting to the track

WARRANTY

- iNTRAXX track "Limited Lifetime Warranty"
- All other products come with a 2-year warranty
- For details refer to FERNO warranty statement.

ITEM NUMBER	PRODUCT	WIDTH	DEPTH	LENGTH	WEIGHT	MATERIAL	FINISH	CERTIFICATION STANDARD	LOAD CAPACITY/ SWL	SOLD IN USA
0480190	SafeMount Tablet General B101UC	5.9 in 151 mm	9.3 in 235 mm	6.6 in 167 mm	2.3 lb 1.06 kg	Plastic	Black	10G 22G 26G	4 lb 1.9 kg	Yes
0480191	Pouch Mount Track Adaptor - Pouch Mount Plate	7.2 in 183 mm	2.1 in 54 mm	22.2 in 564 mm	2.7 in 1.2 mm	Aluminum	Powder Coated White	10G 22G 26G	35 lb 16 kg	Yes
0480193	SafePak Multi-Mount - 3-Row (SafeMount included)	16.7 in 425 mm	1.7 in 45 mm	23.6 in 600 mm	7.3 lb 3.3 kg	Aluminum	White	10G 22G 26G	26.5 lb 12 kg	Yes
0480196	ACC - Mount SecureLoc+ - Stryker chair adaptor	6.2 in 160 mm	10 in 255 mm	7.4 in 190 mm	2.7 lb 1.2 kg	Aluminum	Powder Coated White	10G 22G 26G		Yes
0480197	Defibrillator Mount Zoll iNTRAXX Wall Mount (Charging)	8.2 in 210 mm	11.8 in 300 mm	6.2 in 160 mm	8.1 lb 3.7 kg	Aluminum	White	10G 22G 26G	26.4 lb 12 kg	Yes
0480198	ACC - Mount SafeMount to Aviation D360 Adaptor Plate	5.9 in 151 mm	.31 in 8 mm	7.5 in 193 mm	.4 lb .19 kg	Aluminum	Standard			Yes
0480199	Suction Unit Mount Combo Adaptor Mount	6.1 in 155 mm	2.3 in 60 mm	6.4 in 165 mm	2.6 lb 1.1 kg	Aluminum	White	10G 22G 26G	—	Yes
0480209	SafePak Multi-Mount - 3-Row Base Plate	16.7 in 425 mm	1.1 in 30 mm	23.6 in 600 mm	5 lb 2.3 kg	Aluminum	White	10G 22G 26G	26.5 lb 12 kg	
0480193	Sharps Bin Mount Sharpsafe Service Kit	N/R	N/R	N/R	N/R	N/R	N/R	N/R	N/R	Yes
0480214	Sharps Bin Mount Sharpsafe Service Kit	N/R	N/R	N/R	N/R	N/R	N/R	N/R	N/R	Yes
0480217	Defibrillator Mount Zoll X Direct Wall Mount (Charging)	8.2 in 210 mm	11.8 in 300 mm	6.2 in 100 mm	3.9 lb 2.8 kg	Aluminum	White	10G 22G 26G	26.4 lb 12 kg	Yes

KEY

(W) Width is measured as 'Y' axis in relation to mounting to the track
 (D) Depth is measured as 'Z' axis in relation to mounting to the track
 (L) Length is measured as 'X' axis in relation to mounting to the track



70 Weil Way
Wilmington, OH 45177

Ambulance Systems

Aviation

Emergency Response System

Military

Mortuary

Rescue