



AUTUMN 2022 | USA

 **FERNO** *RESCUE SOLUTIONS GUIDE*



Table of Contents

RESCUE & RETRIEVAL

Stretchers

Titan	6
Pinnacle	8
Model 71	8
Advantage	9
Spartan	9
Gazelle	10
Stretcher Accessories	11

Rescue Stretchers

TRS and Accessories	12
Res-Q-Mate and Accessories	13
LifeSaver	14

Stretcher Carriers

SAERBag 3	14
The Porter	15
The Tirol Kit	16

Immobilization & Extrication

K.E.D. PRO and K.E.D. Lifting Bridle	18
Mantis Tri-Fold Backboard	18
XT Utility Board	19
XT Pro	19
XT Floating	19
XT Upgrade Kits	19
IndustriPOD Tripod Series	20

WATER RESCUE

Rescue Boat Sea Scoopa	22
------------------------	----

RESCUE ACCESSORIES

Kigali Packs	24
Res-Q-Link Recovery Pole	25



FERNO® RESCUE

When you're concentrating on rescuing a patient, you rely on your equipment to perform 100 percent. FERNO rescue gear has you covered.

Over the decades, FERNO has built a strong global portfolio of specialist equipment with cross-compatibility across EMS and Rescue. Today, FERNO equipment is trusted and used everyday in over 150 countries by emergency care and rescue providers in the community, private and government sectors, aviation, defense, and NGOs.

Our equipment is designed with the end-user in mind and manufactured to stringent quality standards. It is engineered to be strong yet remain light in weight. The many thoughtful features included in our designs makes FERNO gear user-friendly, intuitive, and efficient to use.

A wide range of accessories, including flotation collars, head shields, handles, straps and wheels, extends the versatility of FERNO rescue equipment. All of these extras further enhance safety and comfort for the rescue teams and their patients.

Contributors to the FERNO Rescue group are respected within the industry for their product solutions: Traverse Rescue®, FERNO Australia, FERNO Italia, FERNO UK, FERNO Norden and Spiracle Technologies.



RESCUE & RETRIEVAL

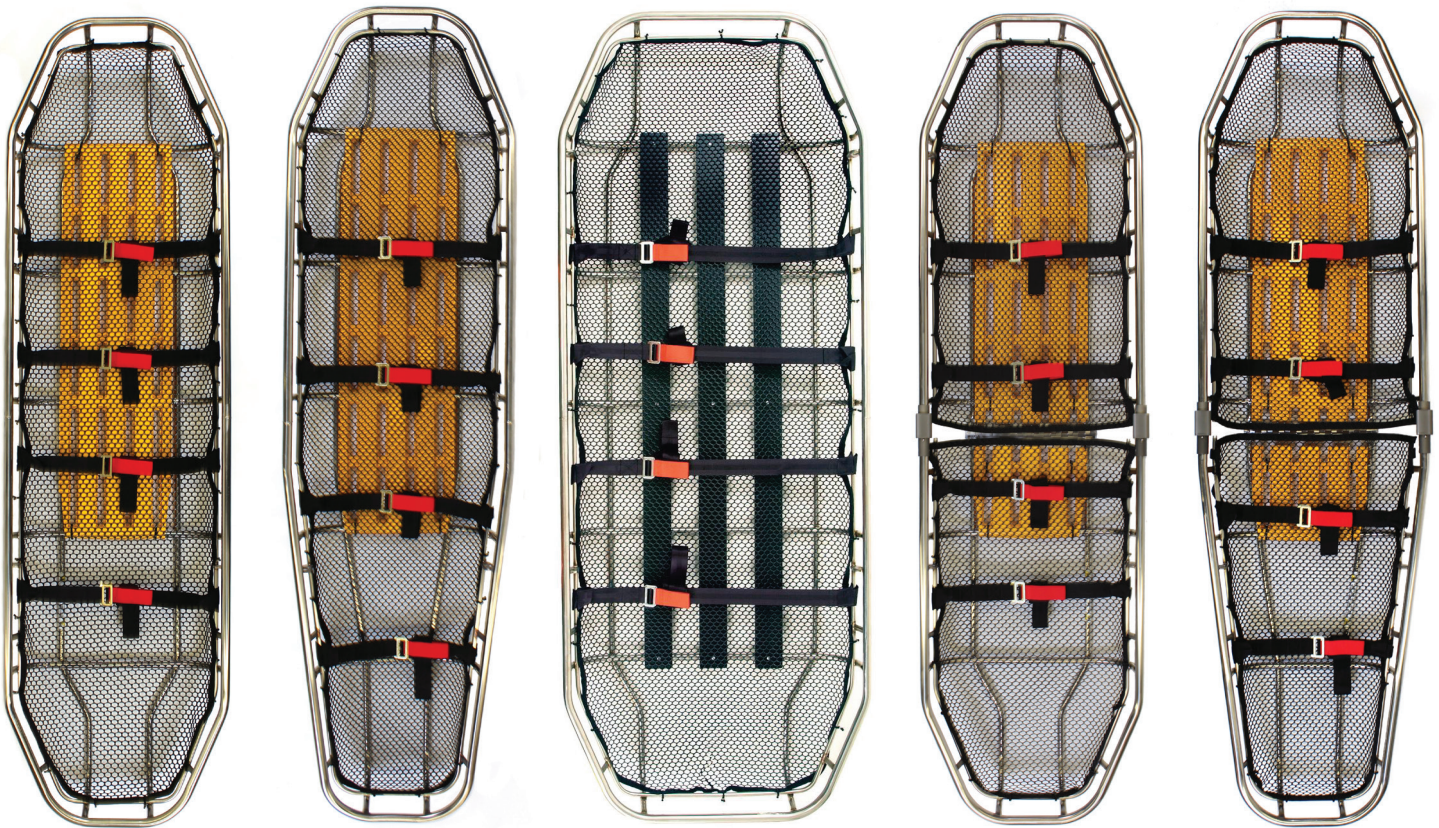
 **FERNO** RESCUE

RESCUE & RETRIEVAL

Traverse Titan Series Litters

An effective redesign of the classic Stokes military-style litter.

- Designed to be user-friendly for technical rescue. Materials survive extreme conditions
- Five styles: **Regular** fits any backboard, **Tapered** allows for easier access into confined areas, **32" Wide** accommodates bariatric patients, and 2 **Split-Aparts** enable easier transport and storage
- TIG-welded frame construction for both stainless steel and titanium
- Smaller one-inch tube frames are easier to handle on long carries
- StratLoad™ attachment points make it quick and safe to clip in, and protects carabiners from wall and rock faces
- LocSafe triple safety feature ensures connections are secure throughout any operation
- Durable and rust-proof High Density Polyethylene (HDPE) netting is attached with shock cord
- UHMW-PE back support is extremely durable and splinter-free
- Wide range of accessories available - refer to page 11



Titan Regular

Titan Tapered

Titan 32" (Wide)

Titan Split Regular

Titan Split Tapered

Mfr. No.	USA Part No.	Description	Width	Length	Length Split	Depth	Depth Split	Weight	Load Rating
11-0101A	RE11019999	Titan Regular SS	58 cm / 23 in	212 cm / 83.5 in	--	18 cm / 7.08 in	--	13.6 kg / 30 lb	1136 kg / 2500 lb
11-0100A	RE11009999	Titan Tapered SS	58 cm / 23 in	212 cm / 83.5 in	--	18 cm / 7.08 in	--	13.6 kg / 30 lb	1136 kg / 2500 lb
11-0102A	RE11029999	Titan 32 SS	81 cm / 32 in	212 cm / 83.5 in	--	18 cm / 7.08 in	--	19 kg / 42 lb	1136 kg / 2500 lb
11-0103A	0107975	Titan Split Regular SS	60 cm / 24 in	212 cm / 83.5 in	116 cm / 45.66 in	19 cm / 7.48 in	25 cm / 9.84 in	15 kg / 33 lb	1136 kg / 2500 lb
11-0104A	RE11049999	Titan Split Tapered SS	60 cm / 24 in	212 cm / 83.5 in	116 cm / 45.66 in	19 cm / 7.48 in	25 cm / 9.84 in	15 kg / 33 lb	1136 kg / 2500 lb

A Testament to a Titan

Titan (mythology): Immortal, being of incredible strength

"In October 2013, I was running a Wilderness SAR course. During these courses we head out into the mountains for five days of self supported SAR activity.

On the third day the students were finishing off the second of two 55m stretcher lower exercises for the day and the stretcher had been put down on the ground at the base of the cliff. The patient – also a student – was still tied into the stretcher and the jockey was disconnecting the ropes from the bridle having called for 1m of slack on the main and belay. Standing at the top of the cliff, the horrible sound of rock-fall below caused me to break out in an instant cold sweat as my blood turned to ice.

A 500kg rock, probably loosened by the passage of the jockey over it, had parted from the face 1.5m above the stretcher and landed on the right side of the stretcher at the hip level, injuring the patient. Cutting a long story short, the patient walked out the hospital 2 days later with nothing but soft tissue injuries. Initially the only visible damage to the stretcher was that the locking collar fitting was cracked and loosened, which was not surprising given that 50 kg+ had just landed in it! These stretchers are the bomb!

Once I took a closer look at it (on level ground) I discovered that the frame had also been deformed and the stretcher was damaged beyond safe use. If the same thing had happened with a plastic Stokes basket the outcome would have been significantly worse.

I'm looking forward to many years of rescuing with our stretcher's successor -- also a Traverse Titan."

Rob Thomas
CEO, School for Mountain Leadership



RESCUE & RETRIEVAL

Traverse Pinnacle Series Titanium Litters

The world's lightest litter for confined space rescue.

- StratLoad™ feature for vertical lifting
- LocSafe triple safety feature ensures connections are secure throughout any operation
- Narrow design allows for entry into and egress from most confined spaces
- High-density polyethylene netting allows water and air to pass through the patient compartment but is fine enough to minimize snagging on debris.
- UHMW-PE back support is extremely durable and splinter-free
- All TIG-welded frame construction litter
- Titanium material is extremely light weight

* Available as Split-Apart or one-piece basket with LocSafe

* Custom powder coating available in Hi-Viz Yellow, Black, and Coyote Brown



Split Apart Pinnacle

Mfr No.	USA Part No.	Description	Width	Length	Length Nested	Depth	Depth Nested	Weight	Load Rating
11-4000	0153254	Pinnacle, 1 piece	48.3 cm / 19 in	209.5 cm / 82.5 in	--	17.8 cm / 7 in	--	6.5 kg / 14.5 lb	408 kg / 899 lb
11-4001	0153255	Pinnacle, Split-Apart	49.5 cm / 19.5 in	209.5 cm / 82.5 in	106.7 cm / 42 in	30.5 cm / 12 in	31 cm / 12.2 in	7.5 kg / 16.5 lb	408 kg / 899 lb

FERNO Model 71 Series

Made with a high-density polyethylene shell supported by a permanently-attached, heavy-duty, aluminum frame. Molded-in runners and handholds make it easy to handle, and brass grommets are strategically located for quick use with Model 418-1 Adjustable Lifting Bridle

- Constructed of a high-density polyethylene shell supported by a permanently attached, heavy-duty aluminium frame
- Molded-in runners and handholds for easy handling over rough terrain
- Strategically-placed brass grommets for quick use with Model 418-1 Lifting Bridle
- Closed-cell foam patient pad is non-absorbent and is able to withstand even the harshest cleaning agents
- Patient pad is removable for easy cleaning or replacement
- Resistant to chemicals, UV, rust, and corrosion
- Includes four two-piece 5' quick-release patient restraints
- Lifting bridle and cases for Model 71 available—refer to page 11



Mfr No.	USA Part No	Description	Width	Length	Length (Split)	Depth	Depth (Split)	Weight	Load Rating
0107100	0107972	Model 71	61 cm / 24 in	218 cm / 85.8 in	---	19 cm / 7.48 in	---	10 kg / 22 lb	272 kg / 820 lb
0107101	0107973	Model 71-S	61 cm / 24 in	218 cm / 85.8 in	117 cm / 46.06 in	19 cm / 7.48 in	26 cm / 10.23 in	11 kg / 24 lb 4 oz	272 kg / 820 lb

Traverse Advantage Litter

The Advantage Litter features a fully-internal stainless steel frame with a sturdy outer HDPE shell attached securely to the top tube. Intended for technical rescue.

- Completely smooth sliding surface on the bottom
- Exposed secondary rail is completely accessible for unlimited options for tying or handling
- 2.2 cm tubing for a more comfortable grip
- Closed-cell foam patient pad is non-absorbent and is able to withstand even the harshest cleaning agents
- Patient pad is removable for easy cleaning or replacement
- Our patented StratLoad™ attachment points are standard on the Advantage



Mfr No.	USA Part No.	Description	Width	Length	Depth	Weight	Load Rating
11-0125A	RE11250399	Advantage Stretcher	60 cm / 23.62 in	216 cm / 85 in	19 cm / 7.48 in	15 kg / 33 lb	1136 kg / 2500 lb

Traverse Spartan Litter

The Spartan is a split-apart litter, designed to be assembled or disassembled in under 15 seconds.

- Recessed sliding surface beneath stretcher, capable of handling rough terrain while protecting the frame
- High Molecular Weight Polyethylene (HMWPE) outer shell
- Completely exposed 22 mm (7/8") top rail for easy handling, even while wearing thick gloves
- StratLoad and LocSafe features as standard
- Split-apart design allows for easy transport and storage
- Available with stainless steel or titanium frame



Mfr No.	USA Part No.	Description	Width	Length	Length Nested	Depth	Depth Nested	Weight	Load Rating
11-0127A	0153256	Spartan, Stainless Steel	62 cm / 24.4 in	218 cm / 85.8 in	112 cm / 44.1 in	19 cm / 7.48 in	25 cm / 9.84 in	16 kg / 35 lb 4 oz	1136 kg / 2500 lb
11-0127TI	0153257	Spartan, Titanium	62 cm / 24.4 in	218 cm / 85.8 in	112 cm / 44.1 in	19 cm / 7.48 in	25 cm / 9.84 in	10 kg / 22 lb	1136 kg / 2500 lb

RESCUE & RETRIEVAL

Traverse Gazelle Series Litters

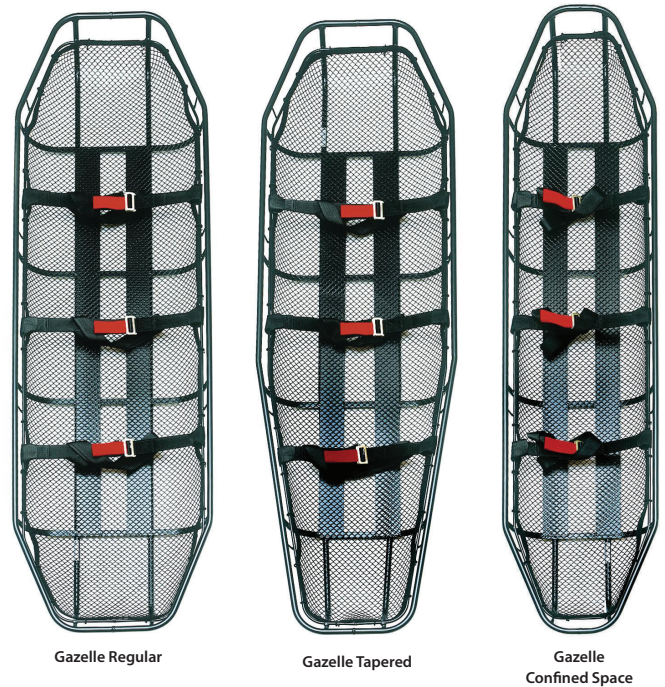
A light, disaster response stretcher that is ideal for industrial rescue organizations.

The Gazelle's steel frame geometry and construction with HDPE netting provide impressive strength along with durability and versatility.

Unique features include flat carbon steel patient support bars that extend down the length of the litter. The tubular runner rails that extend the full length provide a durable base that minimizes stretcher damage.

The Gazelle represents a cost-effective alternative that meets the needs of first responders.

- Tested to and beyond a 408 kg static threshold
- Supplied with three steel double bar restraints
- HDPE netting allows water and air flow
- Black powder coated, all carbon steel frame construction
- Tubular bottom runner rails
- Standard version compatible with FERNO tapered backboard
- Tapered feature allows easier access in confined areas
- Cost-effective



Mfr No.	USA Part No.	Description	Width	Length	Depth	Weight	Load Rating
11-0105	110105	Gazelle, Regular	62 cm / 24.4 in	210 cm / 82.67 in	17 cm / 6.7 in	15 kg / 33 lb	408 kg / 899 lb 7 oz
11-0106	110106	Gazelle, Tapered	62 cm / 24.4 in	210 cm / 82.67 in	17 cm / 6.7 in	15 kg / 33 lb	408 kg / 899 lb 7 oz
11-0107	110107	Gazelle, Confined Space	46 cm / 18.1 in	210 cm / 82.67 in	17 cm / 6.7 in	14 kg / 30 lb 13 oz	408 kg / 899 lb 7 oz

LITTER READY REFERENCE

US Part No.	Description	Basic Rescue	Technical Rescue	Water Rescue	Confined Space	Bariatric	NFPA	Weight Capacity (lbs)
0107972	FERNO Model 71 Stretcher	•		•				600
0107973	FERNO Model 71-S (2 Piece) Stretcher	•		•				600
11-0100A	Titan Tapered Stainless Steel Litter	•	•	•			•	2500
11-0101A	Titan Regular Stainless Steel Litter	•	•	•			•	2500
11-0102A	Titan 32 Stainless Steel Litter	•				•		2500
11-0103A	Titan Split - Regular Litter	•	•	•			•	2500
11-0104A	Titan Split - Tapered Litter	•	•	•			•	2500
11-0105	Gazelle - Regular Litter	•						900
11-0106	Gazelle - Tapered Litter	•						900
11-0107	Gazelle - Confined Space Litter	•			•			900
11-0119TIROL	TIROL Titan Titanium Litter w Plates		•					2500
11-0125A	Advantage Litter	•	•	•				2500
11-0127A	Spartan Stainless Steel, 2 Piece (red) Litter	•	•	•				2500
11-0127TI	Spartan Titanium, 2 Piece (red) Litter	•	•	•				2500
11-4000	Titan Ti Pinnacle Confined Space Litter		•		•			900
11-4001	Titan Ti Pinnacle Confined Space, Split-Apart Litter		•		•			900
19-0100	Traverse Rescue Litter	•	•		•			Vertical Lift: 550 Horizontal Lift: 771

Model 71 Accessories



FERNO 418-1 Adjustable Lifting Bridle



Cases for Model 71 and 71-M
Provide protection and storage. Available with and without lettering—see table below.

Traverse Basket Accessories



Traverse Hard-Eye Litter Bridle



Traverse Soft-Eye Litter Bridle



Traverse Stretcher Cover
Provides protection and storage.



Traverse Split-Apart Stretcher Cover
Protection and storage.



Traverse Stretcher Patient Cover



Traverse Stretcher Patient Cover with zip & handles



Sherpa Stretcher Shoulder Harness
Distributes the weight for more ergonomic carry.



Split-Apart Stretcher Shoulder Harness
For safer foot travel across rough terrain.



Wide Stretcher Handle
Fits Titan series, Titan 32, and Gazelle.



2-in-1 Rescue Pillow and Blanket



Restraint Straps
1 3/4" web with a two-bar, three-bar steel pass through buckle.



Traverse Stainless Steel Carabiner

Mfr No.	USA Part No.	Description
0312390	0312390	FERNO 418-1 Adjustable Lifting Bridle - Orange Bag
0311800	0311800	Case for 71 Lettered, Orange
0311800	0311804	Case for 71 Lettered, White Cross, Orange
0311820	0311820	Case for 71-S Lettered, Orange
0313943	0313943	Flotation Collar
15-0108	0313897	Hard Eye Litter Bridle
15-0109	0313898	Soft Eye Litter Bridle
05-0144	0822069	Traverse Stretcher Cover, Yellow
05-0145	0374909	Traverse Split Apart Stretcher Cover

Mfr No.	USA Part No.	Description
11-0130	0374910	Traverse Stretcher Patient Cover - Blue
15-0131	0374911	Traverse Stretcher Patient Cover with Zip & Handles
15-0145	0374919	Traverse Sherpa Stretcher Shoulder Harness
15-0150	0374920	Traverse Split-Apart Stretcher Harness (each)
15-0240	150240	Traverse Wide Stretcher Handle
EB 700YP	0374912	Traverse 2-in-1 Rescue Pillow and Blanket
04-0108 120	0374914	Traverse Restraint Strap 120" Long (each)
04-0108-4	0374915	Traverse Restraint Strap Set of 4 58" Long
30-C015	0832288	Traverse Stainless Steel Carabiner

RESCUE & RETRIEVAL

Traverse Rescue Stretcher (TRS)

The roll-up, compact and lightweight design of the TRS makes it ideal for high-angle, confined space, horizontal, or vertical rescue.

When deployed, the wrap-around design forms rigid sides and gives the patient a feeling of security as well as protecting limbs and body from further injury during evacuation procedures.

Both the Traverse and Vertical Rescue Stretchers are fitted with many carry handles as well as six lifting slings that provide a good variety of options for transportation and lifting. Also supplied standard is an integrated and comprehensive color-coded, full-body restraint system that includes a padded head restraint, six over body restraints, shoulder and groin straps and a generous foot strap to assist with vertical lifts.

When not in use, the stretchers roll up and are easily housed within the included Cordura storage bag, which doubles as a backpack.

- Constructed from internal high-density polyethylene with a mixture of tough 1000 and 1680 denier Cordura with a heavy polyurethane coating
- Various carry handles and lift slings provide many options for transport or evacuation lifting
- Integrated color-coded head, shoulder, groin and foot restraints
- Six exterior restraint straps assist in wrapping and securing the stretcher around the patient
- Includes a Cordura storage bag with backpack shoulder straps



FERNO VRS 6-Point Lift Bridle

Each adjustable sling arm is color-coded and identified to ensure swift deployment and correct placement.

This is particularly helpful to operators working under stressful conditions, and when speed is critical.



Mfr No.	USA Part No.	Description	Width (Widest)	Width (Narrowest)	Length	Weight	Load Rating (Horizontal)	Load Rating (Vertical)
19-0100	0107977	Traverse Rescue Stretcher (TRS)	82 cm / 32.3 in	45 cm / 17.7 in	201 cm / 79 in	8 kg / 17 lb 10 oz	350 kg / 771 lb 9 oz	250 kg / 551 lb 2 oz
BRB-VRS	0374916	FERNO VRS 6 Point Lift Bridle					Rated to 25kN / 5620 lb	

FERNO Res-Q-Mate Rescue Stretcher

Designed for rapid evacuation in building collapses, mine rescue, helicopter, and confined space rescue.

- Rigid frame provides an ideal platform for evacuating patients with suspected spinal injuries. Torso and leg flaps wrap around the patient while a head restraint and four adjustable, color-coded, chest, thigh and lower leg straps assist in securing the patient.
- Constructed of high grade stainless steel and quality synthetic materials, the Res-Q-Mate is resistant to rot and corrosion and designed to be easily wiped clean
- Folds compactly and nests inside a heavy-duty reflective backpack.
- The Res-Q-Mate Rescue Stretcher is supplied with:
 - Four-point lifting bridle,
 - 50 m tag line system,
 - Adjustable head restraint,
 - Head pillow
 - Reflective backpack.
 - NATO Stocking Number: 6530-66-158-4325



Res-Q-Mate Lift Bridle

The Lift Bridle is fixed in length for optimal weight distribution and supplied with four lightweight carabiners.

Working Load Limit: 500 kg/1102 lb

FERNO Res-Q-Mate Stretcher Handle Kit

When the FERNO Res-Q-Mate Stretcher needs to be carried for a lengthy period, the Handle Kit offers greater carrying options for the rescuer by providing more comfortable and lift-friendly positions.

The Handle Kit conveniently locks in position at either end of the stretcher. Ideally the Res-Q-Mate Handle Kit should be used with the Res-Q-Mate Shoulder Harness so the combined weight of the patient and stretcher can be transferred from the arms and evenly shared across the shoulders, chest, and back.



Shown with optional stretcher handle and shoulder harness

FERNO Res-Q-Mate Shoulder Harness

Complements the Res-Q-Mate Handle Kit and assists in long haul patient retrieval.

Mfr No.	USA Part No.	Description	Width	Length (Folded)	Length (Deployed)	Depth (Folded)	Weight (Complete)	Load Rating
FWE2060	0153259	FERNO Res-Q-Mate Rescue Stretcher	11 in	39.5 in	73 in	7 in	38 lb 9 oz	350 lb
BRB-2063	0374924	FERNO Res-Q-Mate Lift Bridle	Working Load Limit	1102 lb	-	-	-	-
FWE2062	0832289	FERNO Res-Q-Mate Stretcher Handle Kit	-	-	-	-	-	-
BRH-2061	0374923	FERNO Res-Q-Mate Shoulder Harness (pr)	-	-	-	-	-	-

RESCUE & RETRIEVAL

FERNO LifeSaver Rescue Stretcher

A modern version of the traditional Neil Robertson Stretcher. Designed to be both quick and easy to use in horizontal and vertical lift situations where minimum bulk is a consideration. Its compact, roll-up design enables easy transport and storage.

- Complete with integral leg and torso flaps that envelope the patient like a traditional corset, complemented by a simple head restraint, five built-in patient restraints and a long foot strap.
- Fitted with various carry handles and stainless steel rings that are used at the foot- and head-end for guiding and lifting the stretcher in vertical applications.
- Made with full length 5 mm ribs interwoven in tough 1000 denier, high-tenacity, nylon fabric to provide full body splinting in a very narrow patient package



Mfr No.	USA Part No.	Description	Width	Length	Depth	Weight	Load Limit
FWELS	17FLS	LifeSaver Rescue Stretcher	104 cm / 40.94 in	153 cm / 60.23 in	3 cm / 1.18 in	5 kg / 11 lb	159 kg / 350 lb 8 oz

FERNO SAERBag 3

Created for the rescue and transport of patients in difficult environments. The outer bag allows space for an immobilized patient on a scoop, backboard, or vacuum mattress. The integrated lifting bridle allows horizontal lift by winch or ropes in challenging situations.

- Tear, fluid, stain, and mold resistant fabric
- Three windows for patient monitoring
- Internal length adjustment system
- Four integrated external patient straps
- Integrated ten-arm adjustable lifting bridle
- Two anti-rotation sails and six tag line links
- Anti-fuse tag line release system
- Six inner securing straps for scoop or backboard
- Patient monitor cable access
- Supplied with carrying case

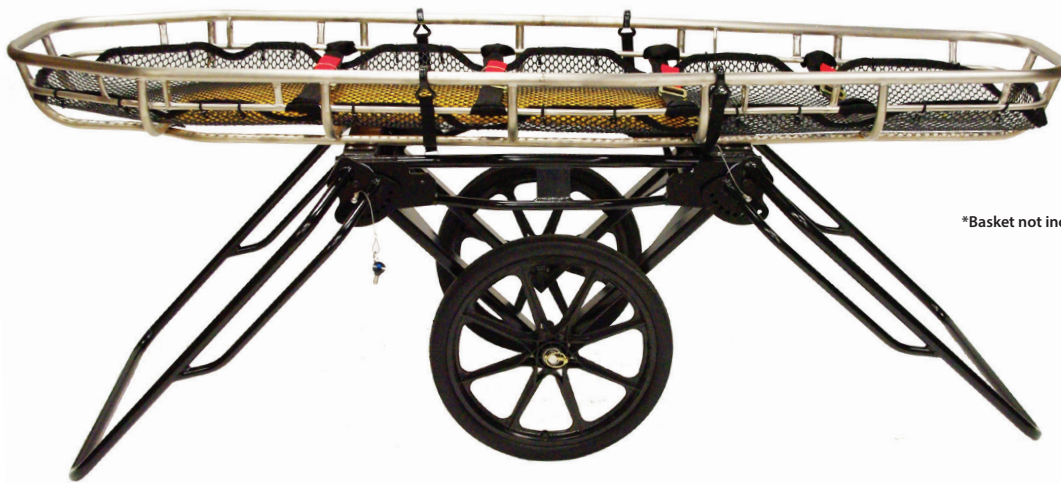


Mfr No.	USA Part No.	Description	Width	Length	Weight	Load Rating
SAERBAG III-Y	0374918	SAERBag III	60 cm / 23.6 in	145 - 200 cm / 57 - 78 in	5 kg / 11 lb	160 kg / 352 lb

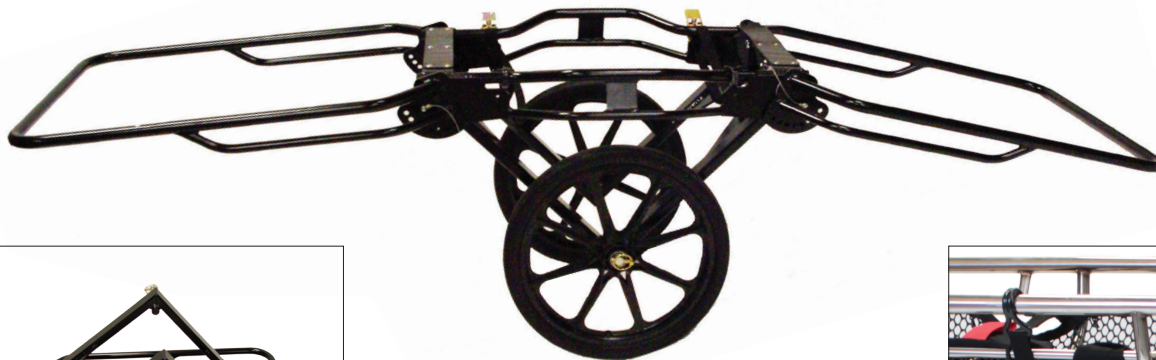
Traverse The Porter

This two-wheeled transport system with eight-position handles offers an all-purpose transport solution, providing greater leverage and easier carrying to reduce fatigue and chance of injury.

- Universal design, compatible with any type and style of ridged litter (even a make-shift litter made from wooden planks or logs)
- Eight-position adjustable handles and two never-flat wheels that will not puncture or deflate on longer hauls
- Fast-ratchet securing system locks litter with two straps and two rubberized steel hooks/strap to cinch it down
- Two securing straps (two hooks per strap) are each rated to 4.5 kN (1,000 lb) and use a strong and durable ratchet-locking device that's easy to operate in all weather conditions
- Hooks on securing straps have a one-inch diameter opening and can be attached to any style stretcher
- Quick release pins on each side of the handle locks them into position with ease (each pin includes a wire lanyard)
- Custom powder coating available in Hi-Viz Yellow or Blaze Orange



*Basket not included



Mfr No.	USA Part No.	Description	Width	Height	Length	Weight	Load Rating
11-2224	112224	Traverse Porter	71 cm / 28 in	50 cm / 20 in	95 cm / 37 in	18.5 kg / 41 lb	227 kg / 500 lb

RESCUE & RETRIEVAL

The Tirol Kit

For use with Titan-Ti Tirol Stretcher only

A lightweight and versatile patient transportation system ideal for long haul retrieval and technical rescue with ergonomic operation on even the most difficult terrain.

At an incredibly lightweight 10.8 kg, the Tirol Kit can be backpacked individually or divided amongst rescuers and quickly setup and used by a single rescuer. **The Tirol Kit is designed for a customized Titan Titanium Split Stretcher featuring purpose-built head and foot plates.** The combination of these two lightweight products makes it possible to operate in the most hostile and inaccessible areas.

The Tirol Kit has four articulating and removable handles, two attached side rail/wheel axle arms, one Light Mule (lightweight wheel), two shoulder harnesses, and a carry bag.

The custom Titan Titanium Split Basket is sold separately.

- Install and remove with the utmost ease and speed, even with a patient on board
- Light-weight 10.8 kg / 23.8 lbs and back-packable
- Single, never-flat wheel system combined with adjustable handles for carrying patient without undue strain
- Carry handles are adjustable to 12 positions to match the rescue team or terrain requirements
- Carry handles can become legs to provide an elevated, stationary position to attend the patient
- Anti-wear and anti-abrasion treatment of metal parts to guarantee extended durability
- 225 kg capacity with SWR safety factor of 1.5 to guarantee performance of the product



Mfr No.	USA Part No.	Description	Weight	Load Rating
21-0120-021	0832287	Tirol Kit includes the Light Mule, handles, shoulder supports and storage bag	10.8 kg / 23.8 lb	225 kg / 496 lb
11-0119TIROL	0153258	Titan-Ti Split Tapered Stretcher, with Plates (Custom)- FOR TIROL USE ONLY	9 kg / 19.8 lb	1134 kg / 2500 lb



IMMOBILIZATION & EXTRICATION

IMMOBILIZATION / EXTRICATION

FERNO K.E.D. Pro Extrication Device

The FERNO K.E.D. Pro features many industry-requested improvements to the original FERNO K.E.D.

These improvements enhance patient comfort and user functionality, resulting in better patient outcomes.

- Color-coded webbing and improved head/chin straps
- Wide padded spine support section
- Additional deceleration strap for holding shoulders back
- Better head stability and security with wider head support piece
- Two additional standing take down manoeuvre straps
- Fold-back chest flaps allow electrode access, and chest examinations
- Backpack carry bag with room for storage of neck collars
- Padded leg straps, quick-connect buckles for confined-space rescue operations
- Rated rear handles for confined-space rescue lifting with optional K.E.D. Pro lifting bridle



FERNO K.E.D. Pro Lifting Bridle

The K.E.D. Lifting Bridle assists in the vertical extrication of patients with a K.E.D. Pro fitted.

Three adjustable, color-coded and labelled attachment straps connect to the lower carry handles and the top central carry handle of the K.E.D. Pro. Fitted with steel adjustment buckles, steel 100 mm/3.94 inch lifting 'O' ring, and 50 kN steel triple-action auto lock carabiners.

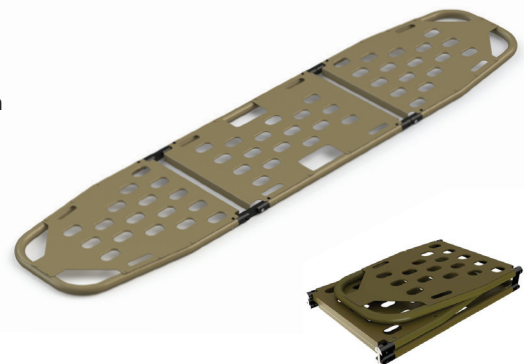


Mfr No.	USA Part No.	Description	Width (Folded)	Width (Deployed)	Length (Folded)	Length (Deployed)	Weight	Load Rating
FWE125-2	0314063	K.E.D. Pro Extrication Device	24.5 cm / 10 in	82 cm / 32 in	84 cm / 33 in	83 cm / 32.6 in	4.5 kg / 10 lb	250 kg / 551 lb
BRB-KED	BRBKED	K.E.D. Lifting Bridle	-	-	-	-	-	22kN / 4945 lbf

FERNO Mantis Tri-Fold Backboard

The ultimate in simplicity and durability. It is ideal for vehicle extraction because of its compact size and rapid employment.

- Compact size and rapid deployment make it ideal for use during vehicle extrication
- Made of light weight aluminum
- Zero risk of the fire hazards, cracking, warping, and gouging that's common with plastic and composite boards in tactical and vehicle operations
- Generous hand holds
- Accepts all common strap systems
- Folds in three sections for compact storage
- Powder-coated frame and patient surface



Mfr No.	USA Part No.	Description	Width	Length (Folded)	Length (Deployed)	Weight	Load Rating
017-0001	0170001	Mantis Tri-Fold Backboard	41 cm / 16 in	63 cm / 24.8 in	182 cm / 71.6 in	5.5 kg / 12 lb	227 kg / 500 lb

FERNO XT Utility Board

A revolutionary utility board designed for rapid extrication and spinal immobilization in confined-space areas and critical situations. It can accommodate a wide range of patients and clinical protocols, including pediatric, special needs, bariatric, and pregnant women.

- Fast extrication in less than 20 seconds with simplified application procedure
- Easy application with four high-visibility color-coded restraints and buckles, Quick Head Immobilizer (QHI), and a smooth surface that slips behind the patient
- Maximum safety with total patient spinal immobilization
- Convenient extrication with four carrying handles
- Lightweight composite fiber board
- 100% radiolucent
- Easy to decontaminate

FERNO XT Pro

The XT Pro enables vertical extrication of a patient in remote locations.

Fitted with additional restraints and leg loops. Tested in accordance with EN1498

FERNO XT Floating

XT Floating is designed to ensure extreme maneuverability during water rescue.

The semi-rigid polyurethane head and the two side floats ensure optimal support, keep the patient's head above water, and prevent capsizing while protecting the victim from accidental impacts.

XT Utility Board



XT Pro



XT Floating



Upgrade Kits

The XT Utility Board can be upgraded to an XT Pro or XT Floating with two retrofitable kits.

Refer to the table below for part numbers.

Mfr No.	USA Part No.	NSN	Description	Width	Length	Height *	Weight (accessorised)	Load Capacity
KIT XT PLUS-B	0832282	6530150200590	XT Utility Board	30 cm / 11.8 in	83 cm / 32.6 in	6 cm / 2.3 in	2 kg / 4.4 lb	160 kg / 352 lb
XT PRO	0832283	6530150200591	XT Pro	30 cm / 11.8 in	83 cm / 32.6 in	6 cm / 2.3 in	3.4 kg / 7.5 lb	160 kg / 352 lb
XT FLOATING	0832284	6530150200592	XT Floating	35 cm / 13.8 in	120 cm / 47.2 in	11 cm / 4.3 in	3.3 kg / 7.3 lb	160 kg / 352 lb
KIT PRO	0832285		Kit PRO (update kit)	Includes 4 restraints with cobra buckle, 2 handling rings, 2 leg hoops, 1 snap-hook, 1 lifting tape				
KIT FLOATING	0832286		Kit FLOATING (update kit)	Includes 4 handling rings, 3 floating tubes, 2 transverse retaining strips, 1 longitudinal retaining strip				

IMMOBILIZATION / EXTRICATION

IndustriPOD®

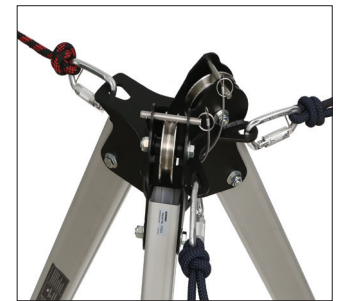
The IndustriPOD® series tripods are well built, versatile, and exceed internationally-recognized rescue systems and standards. The heavy-duty design is suited for confined-space work and rescue where guaranteed performance is critical.

Common and Optional Features

- Rectangular, fully-adjustable legs with quick action lock leg pins
- One piece fabricated steel head
- Adjustable foot with aggressive non-slip tread pattern
- Adjustable foot tether strap
- Three tie off points for rigging or stabilization
- Optional heavy-duty rip-stop vinyl IndustriPOD carry bag 36-1019
- Optional hold-down stake for soft ground conditions 26-2056-0
- Optional foot step for easy access to tripod head 07-1026-0
- Optional equipment bracket 90-0119
- Optional fall arrest block adaptor APOD-FA



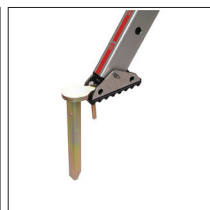
IndustriPOD with M12 eye-bolt anchor point



IndustriPOD+ with two 70mm sheave pulleys and pulley detent pins to prevent rope/cable jump



Heavy Duty Carry Bag
0374917



Hold Down Stake
0832277



Step
0832278



Equipment Bracket
0832279



Fall Arrest Block Adaptor
0832280

Mfr No.	USA Part No.	Description	Clearance	Overall Height (max)	Overall Height (collapsed)	Inside Diameter of Feet	SWL	Weight
FWE-INPOD	0832275	IndustriPOD	Ground to Eyebolt 227.5 cm / 89.5 in	246.6 cm 97 in	165 cm 65 in	218.5 cm 86 in	550 kg / 86 in from Eyebolt 360 kg / 793.6 lb from Side Plate	23 kg 50 lb
FWE-INPOD+	0832276	IndustriPOD+	Ground to Head 227.5 cm / 89.5 in	256.6 cm 101 in	175 cm 69 in	218.5 cm 86 in	220 kg / 485 lb Pulley over Leg 360 kg / 793.5 lb from Side Plate	25 kg 55 lb

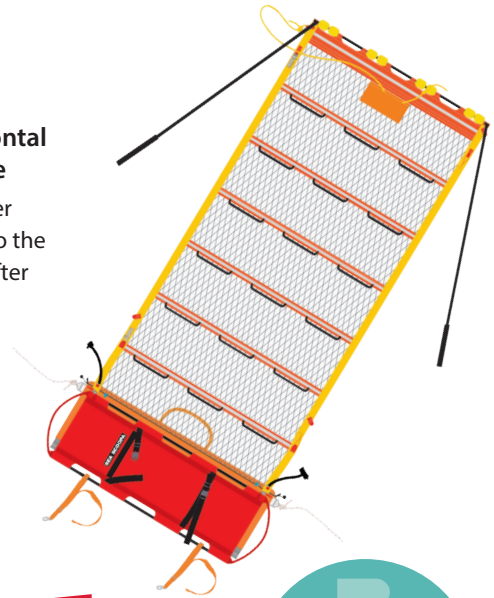


WATER RESCUE

WATER RESCUE

Rescue Boat Sea Scoopa

Designed for the rescue and retrieval of a man overboard (MOB) in a horizontal or vertical position, SeaScoopa enables two crew members to complete the rescue operation without entering the water. Favored by coast guard and water rescue agencies overseas, the Sea Scoopa includes an integral stretcher that clips on to the rescuers' safety harness, allowing the MOB or patient to be stretchered immediately after water retrieval. This eliminates unnecessary handling of the patient.



1 SCOOP THE PATIENT

The SeaScoopa deploys in under two minutes. The bright, reflective net has a rigid outer batten with floats and handgrips to aid lifting. The crew members hold this batten away from the vessel with two poles attached to its fore and aft ends to form a scoop shape.

Capture the patient while the boat is in motion and has steerage. SeaScoopa's unique patented scoop net prevents the patient from being swept out the aft end during capture.



2 LIFT FROM WATER

Once scooped and netted, the patient is brought on board using a rolling and lifting motion (called parbuckling) by two crew members—first using the handgrips on the outer floating batten, then the six handgrip sets incorporated in the body of the net.

SeaScoopa's design and 2:1 mechanical advantage of the rolling lift reduces the lift load by 50%, improves the operators' lifting techniques, reduces their risk of back injury and is better for the patient by reducing the risk of circulatory collapse during the rescue process.



3 STRETCHER THE PATIENT

The patient is received into SeaScoopa's integrated, lightweight stretcher once he or she is raised over the gunwale. The outer pole of the stretcher is supported during this process by clipping onto the rescuers' life jacket D-ring.

The inner side of the stretcher is then detached from SeaScoopa's net by releasing two snap shackles and the patient is either lowered to the deck or transferred elsewhere after being restrained to the stretcher.



USA Part No.	Load Limit	Packed (W x H)	Net Dimension (W x L)	Weight
EKITSEASCOOP3.3 (3.3 m model)	300kg / 661 lb	2050mm x 525mm / 81 in x 20.5 in	1830mm x 3440mm / 72 in x 135 in	17kg / 37.5 lb
0832281 (4.3 m model)	300kg / 661 lb	2050mm x 525mm / 81 in x 20.5 in	1830mm x 4440mm / 72 in x 175 in	20kg / 44 lb



RESCUE ACCESSORIES

 **FERNO RESCUE**

RESCUE ACCESSORIES

Traverse Kigali Backpack

Kigali 30 (30 liter) features a molded back support and shoulder harness, unpadded waist belt and a rubber-grip grab-handle.

Kigali 35 (35 liter) features a molded back support and shoulder harness, as well as a padded waist belt and rubber-grip grab-handle.

Kigali 45 (45 liter) features a fully adjustable harness system that includes two aluminum stays. It has a heavily-padded waist belt, and is designed to carry heavy loads.

- Layout includes two external pockets configured with double elastic loops and pockets, large top opening main compartment with additional compartments and hydration pocket
- Removable cross, large main zipper, built-in (removable) rain cover
- Available colors:
 - Red/Black (30, 35 & 45)
 - All Black (35 and 45 only)



Kigali 45 loaded with gear



Mfr No.	USA Part No.	Description	Colour	Weight	Capacity
20-0030	RE00300399	Kigali 30	Red Only	2 lb 13 oz	30 L / 1830 cu in
20-0035	RE00350399	Kigali 35	Red	3 lb 12 oz	35 L / 2135 cu in
20-0035BK	RE00350999	Kigali 35	Black	3 lb 12 oz	35 L / 2135 cu in
20-0045	RE00450399	Kigali 45	Red	4 lb 14 oz	45 L / 2750 cu in
20-0045BK	RE00450999	Kigali 45	Black	4 lb 14 oz	45 L / 2750 cu in

FERNO Res-Q-Link Recovery Pole 0832290

The Res-Q-Link Recovery pole is an extension pole for rescues at height. It deploys instantly to enable remote attachment of a victim's safety harness to a rescue recovery system, without needing to descend to the victim.

A favorite among emergency, rescue, tactical and industrial response teams overseas, the Res-Q-Link is a unique and multi-functional rescue pole incorporating many features and benefits:

- Large alloy double action hook compatible with most recovery systems
- Allows two configurations to provide versatility when rescuing a fall victim
- Extends from 150 cm to 280 cm
- Fiber glass outer pole and rubber-coated handle for maximum grip and control in long-reach scenarios.
- Flashlight holder for low-light scenarios compatible with most slim line flashlights
- Rope and web cutting knife to cut victim free once a recovery system is attached
- Additional double-action hook available (VCT L3536201)



Large alloy hook with flashlight and flashlight holder (flashlight not supplied)

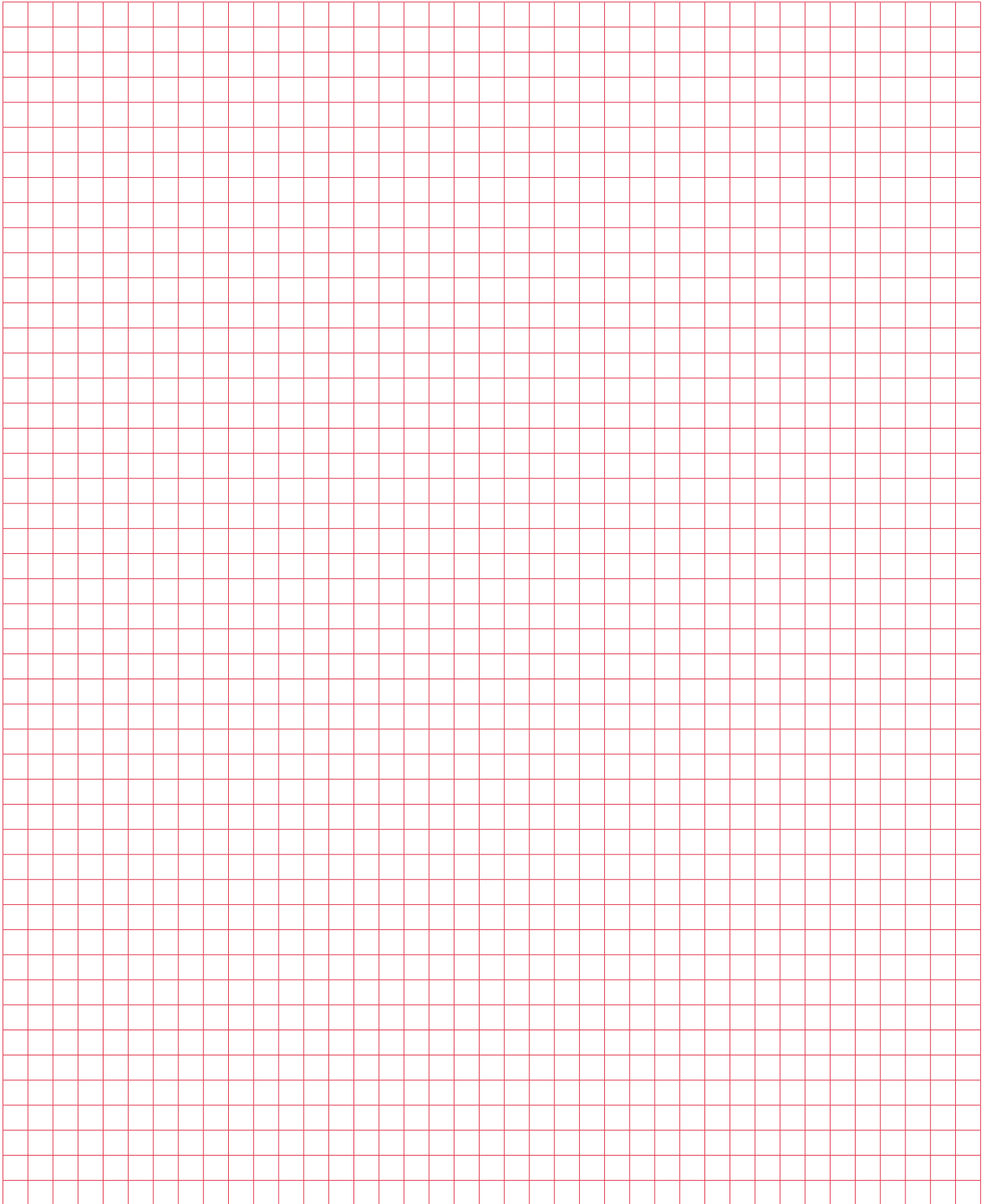


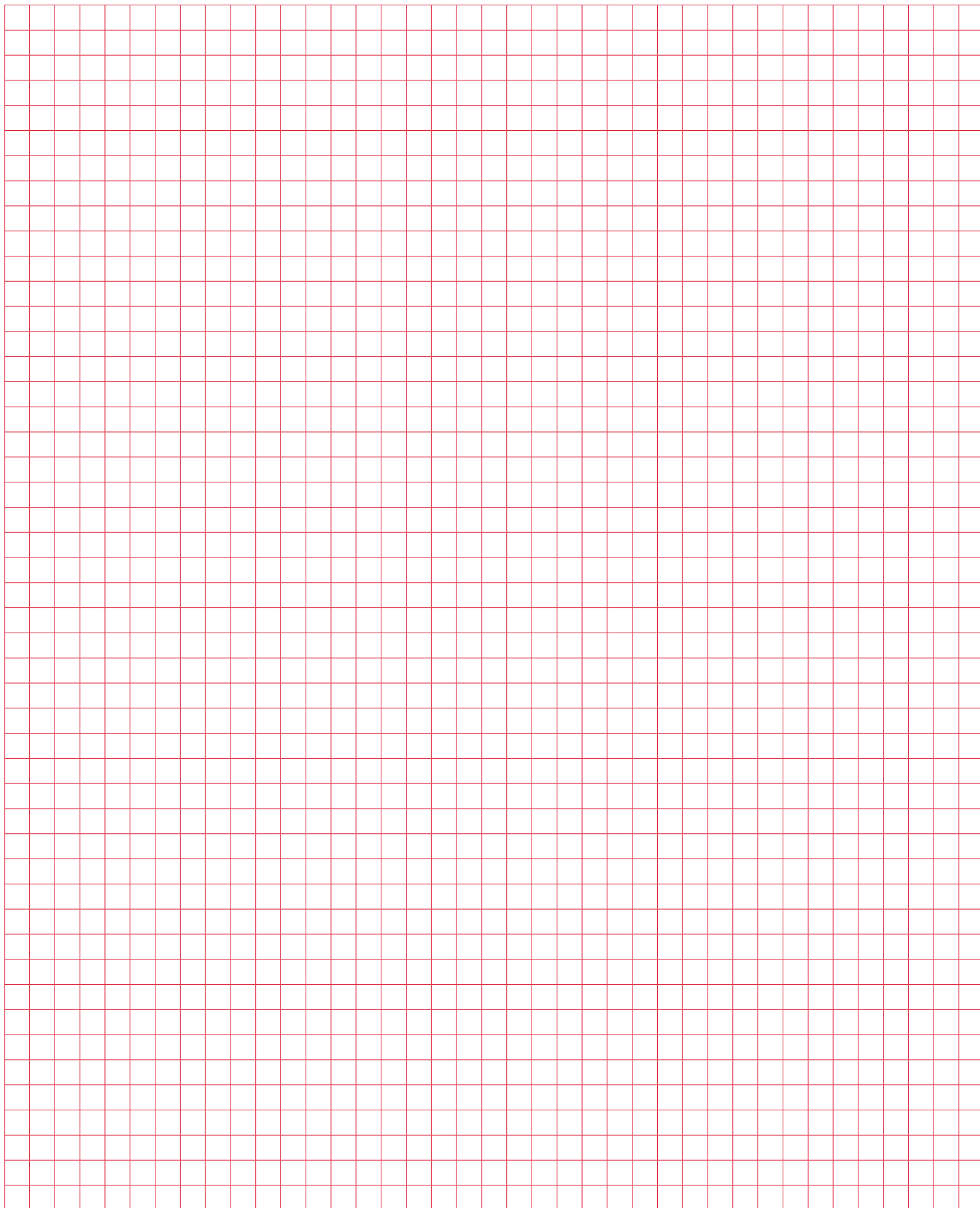
Large alloy hook with web cutting knife



Large alloy hook, knife in stored position









70 Weil Way
Wilmington, OH 45177

EMS

Rescue

Aviation

Military

Mortuary

USA
FERNO.COM

INTERNATIONAL
FERNORESCUE.COM

Products depicted in images and product specifications are subject to change. Contents herein are trademarks or registered trademarks of Ferno-Washington, Inc. ©2022 FERNO